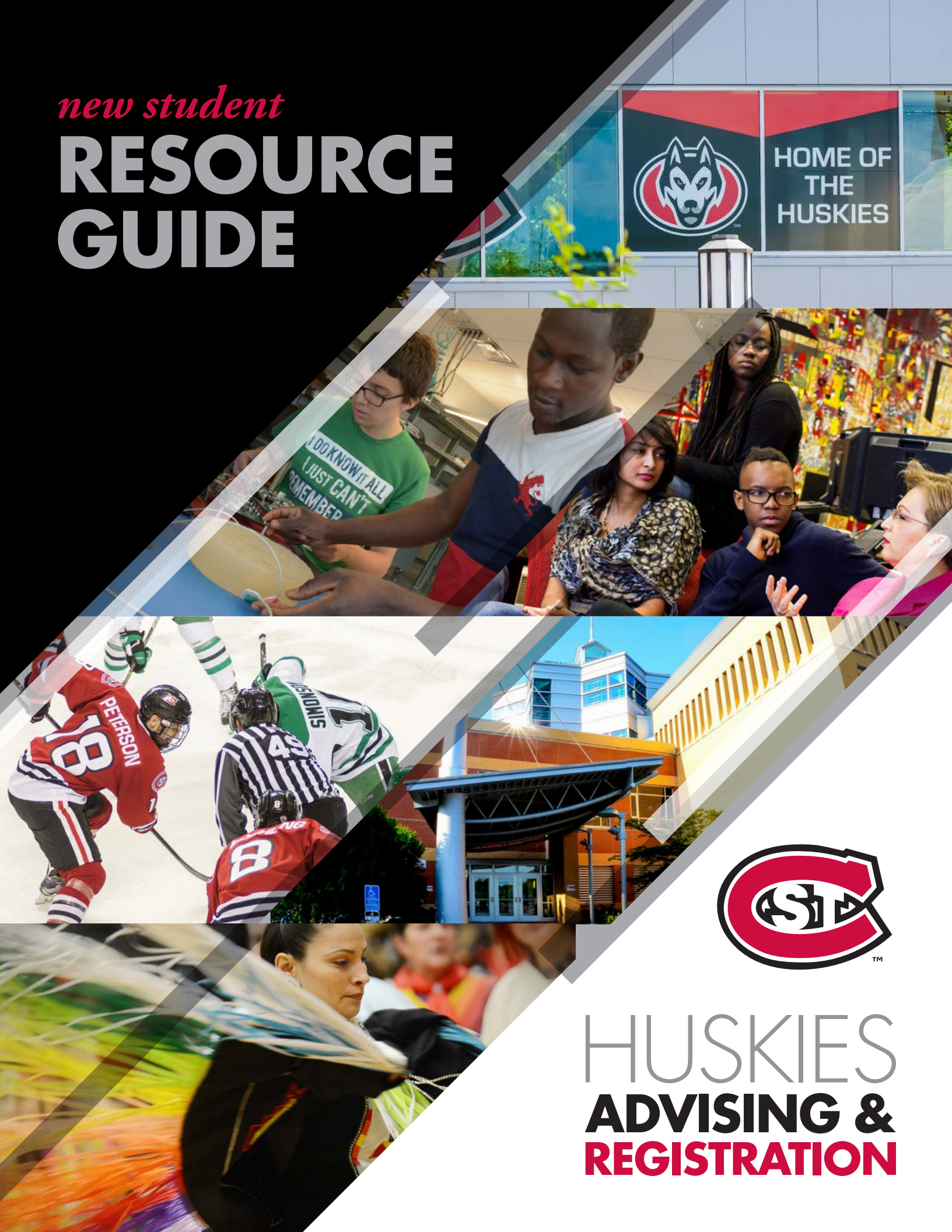


new student
**RESOURCE
GUIDE**



HUSKIES
ADVISING &
REGISTRATION



WELCOME!

Welcome to St. Cloud State and the academic advising and course registration segment of your orientation to university life. Whether you are on campus for an Advising and Registration Day, working online with an advisor to register for classes, or working individually with an advisor on campus, you are taking an important step toward becoming a St. Cloud State student. We invite you to help us personalize your experience at every step of your orientation.

Our job is to create spaces and provide resources during your Advising & Registration Day where you can build on the strengths and skills that have brought you to the university. Our commitment is to your success.

You are joining a vibrant, diverse community that welcomes 3,500 new first-year and transfer students each year, each with unique personalities, goals, and dreams for the future. We encourage each of our students to actively participate in the choice of classes and activities that will be the foundation of your college years.

At St. Cloud State we also offer a wide variety of academic programs to choose from and the resource people you need to assist you in the process of making good choices in your pursuit of a baccalaureate degree. Your first year is a distinctly important time for major and career exploration and we have committed some of our brightest and best to assist you in that process.

Regardless of the distinct path each student will traverse at the university, we share some common commitments

with regard to the attributes all students will be encouraged to enhance in pursuit of a baccalaureate degree. At St. Cloud State this finds expression in Our Husky Compact: a

commitment we make to our students and students make to their education that will set them apart and prepare them to be global citizens of the 21st century. When students graduate with a St. Cloud State education, they will:

- ◇ Think Creatively and Critically
- ◇ Seek and Apply Knowledge
- ◇ Communicate Effectively
- ◇ Integrate Existing and Evolving Technologies
- ◇ Engage as a Member of a Diverse and Multicultural World
- ◇ Act with Personal Integrity and Civic Responsibility

Speaking for all of us at St. Cloud State, we wish you all the best as you embark on this exciting part of your life.

Glenn M. Davis
Interim Assistant Provost of University College



OUR HUSKY COMPACT

TABLE OF CONTENTS

WELCOME LETTER (OUR HUSKY COMPACT).....	INSIDE FRONT COVER
NEW STUDENT CHECKLIST	2
RESOURCE DIRECTORY	4
Advising	
Tutoring and Academic Support	
Parking and Transportation	
Additional Programs and Resources	
Star Alert	
CAMPUS CALENDAR.....	7
FINANCING YOUR EDUCATION	8
Applying for Financial Aid	
Types of Financial Aid	
Affinity Plus Federal Credit Union	
Paying Tuition & Fees	
Glossary of Terms	
STUDENT EXPECTATIONS	11
Student Handbook/Student Code of Conduct	
Respect and Responsibility Program	
Academic Performance Standards	
Tobacco Policy	
TAKING CARE OF BUSINESS.....	12
Placement Testing	
Campus Card	
Husky Bookstore	
COMMON READING PROGRAM	13
ADVISING & REGISTRATION	14
Academic Advising	
Graduation Requirements	
College Success Strategies	
Office of Records and Registration	
Transfer Credits	
Degree Audit Report	
ACADEMIC ORGANIZATIONAL CHART AND RESOURCES	18
Academic Organizational Chart	
Student Relations Directors / Experiential Learning and Outreach Directors	
STUDENT TECHNOLOGY RESOURCES.....	19
HUSKIES FIRST FOUR/ORIENTATION	20
REGISTERING FOR CLASSES	21
e-Services & St. Cloud State Email Login Instructions	
Registration Instructions	
Semester Schedule Template	
Registration Lab Checklist	
LIBERAL EDUCATION PROGRAM	24
ACADEMIC RUBRICS	28
WHAT MAKES ST. CLOUD STATE A GREAT CHOICE.....	INSIDE BACK COVER
CAMPUS MAP	BACK COVER



ST. CLOUD STATE UNIVERSITY

EDUCATION FOR LIFE.



MINNESOTA STATE

St. Cloud State University,
a member of Minnesota State

NEW STUDENT CHECKLIST

AFTER YOUR ADVISING AND REGISTRATION DAY / BEFORE CLASSES BEGIN

- ☐ Purchase your parking permit if you plan to have a vehicle on campus (see page 4)
- ☐ Add your St. Cloud State Email account to your smart phone (click on "Ask St. Cloud State" button at bottom of www.stcloudstate.edu for instructions)
- ☐ Final high school transcript needs to be sent indicating high school graduation date to the Office of Records & Registration (first year students only)
- ☐ Send official college transcripts if you have transfer credits (see page 17)
- ☐ Check your St. Cloud State email through Huskynet for important announcements (see instructions on page 19)
- ☐ U.S. citizens and eligible non-citizens, apply for financial aid at www.fafsa.gov, and then check your financial aid status on e-Services to verify that no additional information is needed. For questions about eligibility contact the Financial Aid Office (see page 8)
- ☐ In mid-June, Review and Respond to your financial aid notification in e-Services
- ☐ Protect your class registration from being canceled by completing financial aid instructions (see Drop for Non-Payment Policy on page 9) by July 31, 2017
- ☐ Purchase books before the first day of class (see page 13)
- ☐ Complete Part One of the Respect & Responsibility requirement before Huskies First Four Days (see page 11)
- ☐ Review the Student Code of Conduct at www.stcloudstate.edu/studenthandbook/code
- ☐ Read *Citizen: An American Lyric* for the Common Reading Program (see page 13)

HUSKIES FIRST FOUR DAYS – AUGUST 17-20, 2017

- ☐ Attend Huskies First Four Days (campus-wide orientation and events, see page 20)
- ☐ Complete Part Two of the Respect & Responsibility requirement (see page 11)
- ☐ Locate your classes (see Campus Map on back cover)

FIRST FOUR WEEKS (DATES REFLECT FALL SEMESTER 2017)

- ☐ Classes begin Monday, August 21, 2017
- ☐ Last day to Drop classes with no financial obligation and Add classes to your schedule is August 25, 2017
- ☐ Attend an Atwood After Dark and other Huskies First 4 Weeks events
- ☐ Attend Mainstreet (Student organization, volunteer, and campus service fair) on August 30, 2017 and connect with organizations/involvement opportunities that interest you
- ☐ Pay your student account balance listed in e-Services by September 5, 2017 to avoid \$30 payment plan fee and a registration hold
- ☐ Visit the Career Center for assistance with resumes for part time jobs, internships, and more
- ☐ Be proactive to find what tutoring options are available to you on campus and also visit the Write Place to learn about their resources to help you be successful (see page 4)
- ☐ Schedule a meeting with your academic advisor to discuss your academic progress
- ☐ Explore wellness and fitness options on campus
- ☐ Visit with at least two professors after class and/or make connections to find a mentor

- ☐ Attend the Gear Up event in October to help decide on your academic major and path
- ☐ Utilize the Career Center to help you identify potential careers and academic majors that match your strengths, interests, and values
- ☐ Explore options for future study abroad experience by contacting the CIS/Education Abroad office (see page 5)
- ☐ Check your class schedule in e-Services for last day to withdraw (if needed)
- ☐ Meet with an academic advisor to prepare for spring registration
- ☐ Attend a cultural night
- ☐ Attend a student organization meeting/join an organization. Need help finding the right fit? Schedule an Involvement Consultation with Department of Campus Involvement (stcloudstate.edu/campusinvolvement, see page 5)
- ☐ File FAFSA for 2018-2019 academic year on October 1, 2017
- ☐ Registration for spring semester begins October 30, 2017. Check your registration window and resolve any holds on your student account in e-services

- ☐ Apply for Huskies Scholarships for the following academic year beginning on January 1, 2018
- ☐ Classes begin Monday, January 8, 2018
- ☐ Last day to Drop classes with no financial obligation and Add classes to your schedule is January 12, 2018
- ☐ Check your class schedule in e-Services for last day to withdraw (if needed)
- ☐ Pay your student account balance listed in e-Services by January 22, 2018 to avoid \$30 payment plan fee and a registration hold
- ☐ Attend Sidestreet (Student organization, volunteer, and campus service Fair) on January 24, 2018 and connect with organizations/involvements opportunities that interest you
- ☐ Schedule a meeting with your academic advisor to discuss your academic progress
- ☐ Registration for fall semester begins March 26, 2018. Check your registration window and resolve any holds on your student account in e-services
- ☐ Apply for housing for fall semester
- ☐ Attend the Career Prep Party event to receive employer coaching and prepare for internships and jobs
- ☐ Continue involvement in a student organization/volunteer experience, etc.



RESOURCE DIRECTORY

The following list of offices does not constitute the full St. Cloud State Directory, which can be found at www.stcloudstate.edu, under Directory.

ADVISING				
Advising & Student Transitions	(320) 308-6075	366 Centennial Hall	stcloudstate.edu/advising	advising@stcloudstate.edu
	Provides academic advising re: Liberal Education Program, majors, Huskies First Four, the ACE Program, and other transitional programs.			
Business Advising Center	(320) 308-3214	229 Centennial Hall	stcloudstate.edu/hbs/advising	busadvising@stcloudstate.edu
	Information regarding liberal education, business core, and referral to other campus resources for business majors.			
Community College Connection Program	(320) 308-6075	366 Centennial Hall	stcloudstate.edu/cc	cccprogram@stcloudstate.edu
	A collaborative first year student bridge program between St. Cloud Technical and Community College and St. Cloud State.			
Honors Program	(320) 308-6623	216 Centennial Hall	stcloudstate.edu/honors	honors@stcloudstate.edu
	Highly selective interdisciplinary program that provides the liberal arts portion of a baccalaureate degree.			
Multicultural Academic Support Center	(320) 308-3952	221 Centennial Hall	stcloudstate.edu/mss	mss@stcloudstate.edu
	Available services include a computer lab, academic advising and support for academic success.			
TUTORING AND ACADEMIC SUPPORT				
Academic Learning Center	(320) 308-4993	236 Centennial Hall	stcloudstate.edu/alc	alc@stcloudstate.edu
	Provides coursework and individualized assistance in reading and study strategies along with course-specific tutoring.			
COSE Tutoring	(320) 308-4870	(320) 308-4080	stcloudstate.edu/cose/resources/tutoring/default.aspx	
	Free tutoring in College of Science and Engineering classes. Located in ISELF 332 (Chemistry, Mathematics, Physics); ISELF 230 (Statistics, Electrical and Computer Engineering, Atmospheric and Hydrologic Science, Mechanical and Manufacturing Engineering); WSB 202-1 (Biology); ECC 136 (Mathematics Education).			
Math Skills Center	(320) 308-3840	224 Centennial Hall	stcloudstate.edu/mathskills	mathskl@stcloudstate.edu
	Tutoring for college preparatory math courses: MATH 070 and MATH 072.			
Richard R. Green House	(320) 308-5392	827 4th Avenue South	stcloudstate.edu/asc	mss@stcloudstate.edu
	Houses the Athletes for Success in the Classroom and Multicultural Tutoring programs for Multicultural Student Services and provides a positive study environment along with individual tutoring/group study sessions to facilitate success in the classroom.			
The Write Place	(320) 308-2031	117 51 Building	stcloudstate.edu/writeplace	writeplace@stcloudstate.edu
	Tutoring for all aspects of the writing process.			
PARKING AND TRANSPORTATION				
Metro Bus	(320) 251-7433	ridemetrobus.com		
	Provides free bus service to St. Cloud State students throughout the St. Cloud area with the U-Pass Free Ride program. Route information and schedules are also available at the Metro Bus Transit Center. Metro Bus Dial-a-Ride service is not part of the U-Pass Free Ride program, and is available for those whose disabilities prevent them from being able to ride the Fixed Route system.			
Northstar Link Commuter Bus / Northstar Commuter Train	(877) 546-5010		catchthelink.com	info@catchthelink.com
	Provides affordable bus service between St. Cloud (with a stop on campus at the Miller Center), Becker, and the Northstar Commuter Rail Line station in Big Lake. From there, commuters can ride the rail from Big Lake to downtown Minneapolis. Route information and bus schedules are available online and at the Metro Bus Transit Center.			
Public Safety Department - Parking	(320) 308-3453	Public Safety Bldg., 526 4th Ave. S.	stcloudstate.edu/parking	parking@stcloudstate.edu
	Assistance with parking and transportation needs while at St. Cloud State.			
Rideshare Board	stcloudstate.edu/parking/transportation.aspx			
	Assists students in ride-sharing/car-pooling for a single trip or on a regular, commuting basis.			
ADDITIONAL PROGRAMS AND RESOURCES				
Adult Learner Student Programs	(320) 308-3292	212A Miller Center	stcloudstate.edu/adultlearners	adultlearners@stcloudstate.edu
	Provides information for students 25 and older, students who have a spouse/partner and students who are veterans about programs available to them.			
American Indian Center	(320) 308-5449	American Indian Center, 901 4th Ave. S.	stcloudstate.edu/aic	aic@stcloudstate.edu
	Provides academic and cultural programs and services to support the self-defined educational needs and goals of the current American Indian students and native communities.			
Atwood Memorial Center	(320) 308-4636	Atwood Memorial Center	stcloudstate.edu/atwood	atwood@stcloudstate.edu
	Community Center of the University, serving students, faculty, alumni, staff and guests.			
Business Services	(320) 308-4012	123 Administrative Services	stcloudstate.edu/srfs	businessservices@stcloudstate.edu
	Information about payment of your bill.			
Campus Card	(320) 308-1683	162 Atwood Memorial Center	stcloudstate.edu/campuscard	campuscard@stcloudstate.edu
	It's your Official Campus ID.			

RESOURCE DIRECTORY

The following list of offices does not constitute the full St. Cloud State Directory, which can be found at www.stcloudstate.edu, under Directory.

ADDITIONAL PROGRAMS AND RESOURCES CONTINUED				
Campus Involvement	(320) 308-2205	134 Atwood Memorial Center	stcloudstate.edu/campusinvolvement	campusinvolvement@stcloudstate.edu
	<i>Provides ways for students to get involved, meet new people, have fun, and support their education through events, activities, leadership positions, student organizations, volunteer opportunities, fraternities and sororities, and Husky Pride and Spirit Initiatives.</i>			
Campus Recreation	(320) 308-3325	Student Rec Center	stcloudstate.edu/campusrec	campusrec@stcloudstate.edu
	<i>Become an active part of the university community and make personal wellness and recreation a part of your experience.</i>			
Career Center	(320) 308-2151	215 Centennial Hall	stcloudstate.edu/careercenter	careercenter@stcloudstate.edu
	<i>Assist students with their career planning needs. Clarify major and career aspirations. Identify internship and employment opportunities, including part-time, summer, and entry-level.</i>			
Center for International Studies (CIS) / Education Abroad	(320) 308-4287	101 Lawrence Hall	stcloudstate.edu/internationalstudies	internationals@stcloudstate.edu
	<i>Resource for international students regarding immigration and life in the United States.</i>			
	(320) 308-0911	103 Lawrence Hall	stcloudstate.edu/educationabroad	educationabroad@stcloudstate.edu
Conflict Resolution Services for Students	<i>Resource for students interested in studying abroad.</i>			
	(320) 308-6150	Brown Hall 115	crcminnesota.org	crc@stcloudstate.edu
Counseling & Psychological Services	<i>Provides assistance to students who are experiencing interpersonal conflicts.</i>			
	(320) 308-3171	103 Stewart Hall	stcloudstate.edu/counseling	counseling@stcloudstate.edu
English for Academic Purposes (EAP)	<i>Individual/couples counseling (Free and Confidential) and workshops to promote personal development and psychological well-being.</i>			
	(320) 308-5275	51 Building, Room 152	stcloudstate.edu/eap	jjcondon@stcloudstate.edu
Financial Aid Office	<i>Assistance with placement into EAP courses for English language learners.</i>			
	(320) 308-2047	106 Administrative Services	stcloudstate.edu/srfs	financialaid@stcloudstate.edu
Health Services	<i>Information on applying for financial aid and types of aid available to finance your education.</i>			
	(320) 308-3191	Hill Hall	stcloudstate.edu/healthservices	healthservices@stcloudstate.edu
Huskies Athletics / Athletic Student Rewards Program	<i>On-campus medical clinic, questions about Student Immunization Form, transferring prescriptions.</i>			
	(320) 308-3102	Halenbeck Hall 329	scsuhuskies.com	scsutickets.com
Husky Bookstore	<i>Students are admitted FREE to all Huskies sporting events on campus with a valid student ID. No pre-registration is required; just show up to the game and swipe your ID! All students are automatically enrolled in the Athletic Student Rewards Program, where points are awarded for each athletic event you attend. Examples of prizes are TV, Laptop, Xbox, Cash, Ipad and more!</i>			
	(320) 308-1489	Centennial Hall (1 st floor)	thehuskystore.com	bookstore@stcloudstate.edu
Husky Tech	<i>Supplier of textbooks and course materials.</i>			
	(320) 308-7000	102 Miller Center	huskynet.stcloudstate.edu	huskytech@stcloudstate.edu
LGBT Resource Center	<i>Your one-stop technology resource on campus. The Computer Store and HelpDesk.</i>			
	(320) 308-5166	142 Atwood Memorial Center	stcloudstate.edu/lgbt	lgbt@stcloudstate.edu
Library	<i>Resources, services, and programs that create inclusive and empowering environments for all.</i>			
	(320) 308-2084	Miller Center	stcloudstate.edu/library	library@stcloudstate.edu
Lindgren Child Care Center	<i>Provides access to research materials, equipment, technology, and student group and independent study spaces.</i>			
	(320) 308-3296	122 Engineering & Computing Center	stcloudstate.edu/childcare	childcare@stcloudstate.edu
Multicultural Student Services (MSS)	<i>On-campus child care for infants, toddlers, and preschoolers.</i>			
	(320) 308-3003	141 Atwood Memorial Center	stcloudstate.edu/mss	mss@stcloudstate.edu
Parent and Family Resources	<i>Resource center for students of color: academic assistance, personal development, multicultural programming, study abroad opportunities and cultural organizations.</i>			
	(320) 308-3111	219 Atwood Memorial Center	stcloudstate.edu/parents	families@stcloudstate.edu
Placement Testing	<i>Coordinate communications and services for parents and families of St. Cloud State students.</i>			
	(320) 308-8378	Brown Hall 115	stcloudstate.edu/placementtesting	placementtesting@stcloudstate.edu
Public Safety Department - Patrol	<i>Placement testing including Accuplacer testing and other major specific placement exams.</i>			
	(320) 308-3333	Public Safety Bldg., 526 4th Ave. S.	stcloudstate.edu/publicsafety	pubsafe@stcloudstate.edu
Records & Registration	<i>Provides 24 hour safety and security services, including vehicle jump start assistance.</i>			
	(320) 308-2111	118 Administrative Services	stcloudstate.edu/srfs	registrar@stcloudstate.edu
Recovery Community	<i>Assistance with navigating eServices, information about transfer credits, veteran's benefits, enrollment verification, and transcripts.</i>			
	(320) 308-6119	214 Atwood Memorial Center	stcloudstate.edu/reslife/recovery.aspx	recovery@stcloudstate.edu
<i>Provides programming, support, services and referrals for students in or seeking recovery from substance use concerns. Safe and supportive on-campus housing available.</i>				

RESOURCE DIRECTORY

The following list of offices does not constitute the full St. Cloud State Directory, which can be found at www.stcloudstate.edu, under Directory.

ADDITIONAL PROGRAMS AND RESOURCES CONTINUED				
Residential Life	(320) 308-2166	Ervin House	stcloudstate.edu/reslife	reslife@stcloudstate.edu
	<i>Coordinates all aspects of on-campus living.</i>			
Student Disability Services	(320) 308-4080	202 Centennial Hall	stcloudstate.edu/sds	sds@stcloudstate.edu
	<i>Ensures students with disabilities have equal access to all opportunities at St. Cloud State by providing accommodations for eligible students who have a documented disability (physical, cognitive or mental/emotional, etc.).</i>			
Student Government	(320) 308-3751	139 Atwood Memorial Center	stcloudstate.edu/studentgovernment	sg-pres@stcloudstate.edu
	<i>Promotes student interests by addressing issues related to the student body and representing students on a state wide level through Students United.</i>			
Student Legal Services	(320) 308-2205	134 Atwood Memorial Center	stcloudstate.edu/campusinvolvement/about/legalservices.aspx	
	<i>Provides free legal consultation to registered students on a variety of topics and issues.</i>			
Student Life and Development	(320) 308-3111	219 Atwood Memorial Center	stcloudstate.edu/sld	studentlife@stcloudstate.edu
	<i>Provides general student assistance. Oversees Student Conduct Program, Student Handbook and Student Code of Conduct.</i>			
U-Choose Alcohol and Other Drug Prevention Program	(320) 308-6175	219 Atwood Memorial Center	stcloudstate.edu/uchoose	uchoose@stcloudstate.edu
	<i>Offers resources, services, programs and referrals focused on alcohol and other drug related concerns and the reduction of high-risk alcohol use.</i>			
Veterans Resource Center	(320) 308-2185	100 Administrative Services	stcloudstate.edu/veterans	veteransresource@stcloudstate.edu
	<i>Provides support in the areas of counseling, veteran transition, scholarships, employment, programming, and advocates for all military-connected students and the community.</i>			
Women's Center and the Gender Violence Prevention Program	(320) 308-4958	Women's Center	stcloudstate.edu/womenscenter	womenscenter@stcloudstate.edu
	<i>Gender equity, leadership, and empowerment events; Gender violence support and advocacy services; Scholarships; Information.</i>			

STAR ALERT



Star Alert, a free St. Cloud State emergency notification system, makes it possible for students to receive notice—by cell phone and/or email—of campus-related emergencies that threaten life, safety or severely impact campus operations.

Students are automatically enrolled in Star Alert annually. In an emergency, Star Alert will send a text message to the cell number(s) and/or email address(es) provided to St. Cloud State via your e-Services account or application. Additional cell numbers and/or email addresses may be added at the website listed below.

Notifications identified as “Star Alert” messages will note the nature of the emergency, what action, if any, you are to take, and where to find more information. Star Alert also will let you know if campus is closed or if classes are delayed or cancelled.

Star Alert notification is in addition to any message the university sends to all St. Cloud State email addresses when there is an emergency.

Depending on the nature and severity of the emergency, other mechanisms may include alerts on the St. Cloud State website and voicemail messages on campus phones.

www.stcloudstate.edu/emergency/staralert.aspx



CAMPUS CALENDAR

CAMPUS CALENDAR 2017-2018

Important dates from Records & Registration

	Summer 2017	Fall 2017	Spring 2018
Classes begin	May 15; June 26	August 21	January 8
End of free drop period	May 16; June 27	August 25	January 12
Last day to add classes	May 16; June 27	August 25	January 12
Last day to drop with a W	Check e-Services	Check e-Services	Check e-Services
Registration begins for next term	February 13	Spring 2018: October 30	Summer 2018: February 12 Fall 2018: March 26
Last day of classes	June 22; August 3	December 8	April 27
Last day of finals		December 14	May 3

For more information regarding registration deadlines visit: www.stcloudstate.edu/srfs

Financial Aid Disbursement Dates

	Summer 2017	Fall 2017	Spring 2018
Aid applied to accounts*	May 18	August 26	January 13
Direct deposits SENT to bank (availability varies)	May 23	August 31	January 18
Checks will be put in the mail	May 24	September 1	January 19

*Financial aid overages may be delayed if you have a prior balance.

For more information regarding financial aid visit: www.stcloudstate.edu/srfs

Due dates for tuition and fees—\$30 fee for a payment plan

	Summer 2017	Fall 2017	Spring 2018
Full payment—no service fee	May 30	September 5	January 22
Deposit—\$300 to reserve classes	April 24	July 31	December 18
1 st payment—1/3 of total charges	May 30	September 5	January 22
2 nd payment—half of balance due	June 14	October 5	February 21
Final payment under Payment Plan due	June 29	November 3	March 23
Payment Plan fee applied (\$30)	May 31	September 6	January 23
Late fee applied (\$50)	June 30	November 4	March 24

There will be a hold on registration if full payment is not received by the final due date.

For more information regarding tuition, fees, billing, and payment and for information regarding refunds for TOTAL withdrawal (zero credits for semester) please visit: www.stcloudstate.edu/srfs

Student and Family Events

Event	Fall 2017	Spring 2018	Location
Move-in to Residence Halls	Thursday, August 17	January 7	Residence Halls
Huskies First Four Days	August 17-20	January 8	
Huskies First Four Weeks	August 21 – September 17	January 9	
Mainstreet and Sidestreet Fall Student Organizations and Community Volunteer Service Fairs	Mainstreet - Wednesday, August 30	Sidestreet - Wednesday, January 24	Atwood Mall (Rain site - Atwood Ballroom)
Family Weekend—Celebrate! St. Cloud State	October 13 – 15		

For more information regarding Huskies First Four Days and Huskies First Four Weeks schedules, visit: www.stcloudstate.edu/firstfour.

For more information regarding Mainstreet/Sidestreet, and Family Weekend, visit www.stcloudstate.edu/campusinvolvement.

FINANCING YOUR EDUCATION

Financial Aid Office

Administrative Services 106
(320) 308-2047
www.stcloudstate.edu/srfs

APPLYING FOR FINANCIAL AID

You'll apply for financial aid (grants, work study, and loans) using the Free Application for Federal Student Aid (FAFSA) at www.fafsa.gov. The FAFSA is available October 1st each year. Remember to file the FAFSA each year since things might change in your family situation (income, number in college, or household size).

Already Applied for Aid? Your official award notification will be posted to your student e-Services when it's complete. You'll receive an email in your St. Cloud State HuskyNet once it's ready. Read the terms and conditions carefully and follow the steps to accept any aid that requires a response (e.g. work study and loans).

Haven't Yet Applied or Not Sure If You Should? You can still apply. Complete the Free Application for Federal Student Aid (FAFSA) at www.fafsa.gov. **St. Cloud State's school code is 002377.**

Transferring to St. Cloud State University? If you plan to apply for financial aid, remember to list St. Cloud State on your FAFSA so we receive your results. **St. Cloud State's school code is 002377.** Ask the Financial Aid Office at your current school (the one from which you are transferring) to cancel any pending financial aid at that school.

TIP: A FAFSA on file with St. Cloud State is a way to hold your course registration.

TYPES OF FINANCIAL AID

- **Grants and Scholarships:** Grants are need-based; scholarships are merit-based. Grants and St. Cloud State scholarships are applied directly to your St. Cloud State bill. Private (non-St. Cloud State scholarships) apply when the University receives the funds from the donor. Your FAFSA results determine your eligibility for federal and state grants. Grants and scholarships do not need to be repaid.**
- **Student Employment:** There are two types of funding for student employment - work study and University employment. Work study is a need-based financial aid program; University employment is not based on financial need. You are paid every two weeks only for hours actually worked. **Work study is not a grant.** If you have work study eligibility listed on your financial aid award notification, follow the steps online to apply for a position. All on-campus and approved off-campus community positions are listed at www.scsucareers.com.
- **Loans:** Loans must be repaid, with accrued interest. Loans may be subsidized (need-based) or unsubsidized (not based on need), federal or private. Only borrow what you need to cover your educational costs. If you decide to borrow a federal loan, you'll accept it online through your e-Services. Do this during the summer to ensure your loan is processed before the semester starts. NOTE: All first-time student borrowers of the federal Direct Loan must complete loan entrance counseling and a Master Promissory Note (MPN) at www.studentloans.gov.

****IMPORTANT:** Withdrawing from or failing to attend class for the entire term, may affect financial aid eligibility and may result in repayment of all or a portion of the student's financial aid. Additional information at www.stcloudstate.edu/srfs/policies/default.aspx.

LOCALLY CRAFTED BANKING

From student loans to free checking accounts and scholarship opportunities, our student products and services are crafted to set you up for success. Visit our branch conveniently located in Atwood Memorial Center.

#bebright

affinityplus.org
(320) 259-7187



AFFINITY PLUS
FEDERAL CREDIT UNION

Not for Profit. For People.™



Affinity Plus is a proud sponsor of Husky Athletics!

FINANCING YOUR EDUCATION

DISBURSEMENT OF FINANCIAL AID

Business Services Office

Administrative Services 123
(320) 308-4012
www.stcloudstate.edu/srfs

PAYING TUITION & FEES

Financial aid is applied to your student account approximately 5 business days after the first class day and after the free drop/add period. See "Student Bill, Payment Options & Due Dates" at www.stcloudstate.edu/srfs/finances/student-bill-payment.aspx or refer to the Campus Calendar in this guide.

- Bills may be viewed online through your e-Services. Students may add one additional user (e.g., a parent) on their e-Services under the "Bills and Payment" section to allow access to billing information.
- Payment plan options are available through the University or an external provider, FACTS/NBS. Information about these payment plans is available at www.stcloudstate.edu/srfs/finances/student-bill-payment.aspx
 - **Payment Plan Fee:** Every semester, 10 days after financial aid is applied, a payment plan fee is charged to all student accounts with a remaining balance. The payment plan fee is currently \$30 and is subject to change without notice.
 - **Late Fee:** A late fee is a charge made to a student account when the balance is not paid in full by the due date. A late fee is charged to a student's account each semester when there is an outstanding balance after the last payment plan due date for spring and fall semesters and after the final payment plan due date for summer semester. The late fee is currently \$50 and is subject to change without notice. Late fees apply to all University past due charges. The only exception will be for current term housing costs on a payment plan set up with the Housing Director or his/her designee.
- Any student with a balance on his/her account after the final due date for the term will be prevented from registering for future semesters.

DROP FOR NON-PAYMENT POLICY

In order to hold your course registration, you must have an established plan to pay for your semester charges. The following options are available to meet the payment plan requirement. **You only need to meet one of the following conditions by the due date.** The specific due date for each semester is posted at

www.stcloudstate.edu/srfs/finances/student-bill-payment.aspx

1. **Your financial aid application (FAFSA) is on file at SCSU**
Once your Free Application for Federal Student Aid (FAFSA) results have been received by St. Cloud State University, the Financial Aid Applied to Tuition and Fees requirement is met.
2. **Make payment directly to St. Cloud State**—select the option that best fits your situation (please include your StarID when sending in payment)
 - Pay tuition and fees in full
 - Pay \$300 to hold your classes

3. **Sign up for NBS e-Cashier payment plan**
www.factstuition.com/ecashier/Index?OpenForm&query=mncustcloudstate
 - There is a \$30 charge collected by NelNet Business Solutions
 - Payment will be charged to your credit card or taken from your checking or savings account on dates specified in your contract with NelNet Business Solutions
4. **Third party authorization is on file with the Business Services Office**
 - To verify whether authorization is on file with St. Cloud State, check your financial aid award in e-Services
 - If it's not on file, contact the sponsoring agency to send authorization to St. Cloud State
 - For additional questions, contact the Business Services Office at (320) 308-4012

VETERANS: Students receiving veteran educational benefits must contact the Office of Records and Registration and make arrangements with the VA Certifying Officer.

WAYS TO MAKE PAYMENT DIRECTLY TO SCSU

- **Online:** (recommended): www.stcloudstate.edu
Master Card, VISA or e-check
 - Click "myHuskyNet" on the top navigation bar
 - Enter your StarID and password
 - Click "e-Services" on the left
 - Click "Bills and Payment" on the left
- **By phone:** (320) 308-4012 between the hours of 8 a.m. and 4:30 p.m.—Master Card, VISA, Discover or American Express.
NOTE: During peak periods, there may be a long hold due to the high volume of calls.
- **In person:** Administrative Services Building, Room 123 between the hours of 8 a.m. and 4:30 p.m. Monday through Friday. Summer hours are 7:30 a.m.–4 p.m.
- **Send check:** St. Cloud State Cashiers, 720 4th Ave S., St Cloud MN 56301-4498 (Please include your StarID when sending payment)
- **Use drop boxes:** Located in front of Administrative Services and near east entrance to Atwood Center

DREAMers!

St. Cloud State University strongly supports DREAMers who are working to complete their college degree. We have dedicated staff members to help you take advantage of the myriad of resources available to DREAMers.

Martha Noyola
Multicultural Academic
Support Center
221 Centennial Hall
(320) 308-3976

Financial Aid Office
106 Administrative Services
(320) 308-2047

More information is also available at the Minnesota Office of Higher Education at www.ohs.state.mn.us/MNDreamAct.

Contingent upon the current Administration.

FINANCING YOUR EDUCATION

GLOSSARY OF TERMS

Award Notification: Available through your e-Services, the award notification lists the type and amount of financial aid you have been awarded. You must be admitted to St. Cloud State University and have a complete financial aid file before the Financial Aid Office can prepare your financial aid award.

Bill: A summary of your charges (e.g., tuition and fees, housing and meal plan, library or parking fines) at St. Cloud State University. Any scholarships, grants, or loans you have been awarded will first apply to your bill. Any aid in excess of your charges (bill) will be disbursed to you. It is your responsibility to view your bill in e-Services; bills will not be mailed.

Budget: The estimated cost of attendance (COA) used by the Financial Aid Office to determine your eligibility for financial aid. Your budget is not the amount that you pay. See also "Cost of Attendance."

Cost of Attendance (COA): Your COA includes estimated costs for tuition and fees, housing and meals, and books/supplies. A modest amount is included in your COA for miscellaneous costs. See "Budget."

Credit Completion Rate (CCR): The number of successfully completed credit hours divided by attempted credit hours. Students are required to maintain a 66.67% CCR to remain in good academic standing. The CCR includes St. Cloud State credits and any accepted transfer credits.

Dropped Course: A course you remove from your class schedule by the deadline through e-Services. You are not charged for the course, and the course does not appear on your transcript. This is not the same as withdrawing from a course. See "Withdrawn Course."

Enrollment levels for financial aid: Full-time: 12+ semester credits, except the Minnesota State Grant which requires 15 credits; 3/4-time: 9-11 credits; half-time: 6-8 credits; less than half-time: 5 credits or less. Federal loans and the student employment program require at least a 6-credit enrollment level.

e-Services Account: Online access to your financial aid, grades, registration, housing and meal plan, change of address, tuition and fees statement, and online bill pay.

Expected Family Contribution (EFC): Calculated when you complete your FAFSA, the EFC is an index schools use to determine your eligibility for federal and state financial aid; it is not the amount you pay for school.

Family Educational Rights and Privacy Act (FERPA): Once you (the student) turn 18 years old, your privacy rights transfer to you. FERPA prohibits schools from providing non-directory information to anyone other than you, including parents and family members, regardless of the age of the student or family support. For the complete policy see www.ed.gov/policy/gen/guid/fpawco/ferpa/index.html or www.stcloudstate.edu/policies/data-privacy/default.aspx.

Free Application for Federal Student Aid (FAFSA): The FAFSA (www.fafsa.gov) is an online application for federal and state grants, loans, and work study. Some scholarships also use information from the FAFSA to determine scholarship eligibility. The FAFSA only calculates your Expected Family Contribution (EFC), it does not award any financial aid.

Holds on Account: A hold may be placed on your account if you fail to comply with various University policies or meet established deadlines. Holds may prevent you from 1) registering for subsequent terms, 2) accessing your grades, or 3) receiving a copy of your transcript.

Loan Entrance Counseling: Required of all first-time student borrowers under the Federal Direct (Stafford) Loan program. You only need to complete loan entrance counseling once. Complete at www.studentloans.gov. Login with your FSA ID (the same used to sign your FAFSA).

Loan Exit Counseling: Required of federal loan borrowers once they are no longer enrolled at least 6 credits. Complete at www.studentloans.gov. Login with your FSA ID (the same used to sign your FAFSA).

Master Promissory Note (MPN): Required of all first-time student borrowers under the Federal Direct (Stafford) Loan program. Your legal agreement to repay your federal loan, the MPN may be completed at www.studentloans.gov. You may sign the MPN with your FSA ID (the same used to sign your FAFSA).

National Student Loan Data System (NSLDS): NSLDS (www.nsls.ed.gov) is the federal database with information about federal grants and loans you received. NOTE: If you just applied for aid, there will not be any information in NSLDS yet.

Registration Hold: A block that prevents you from registering for classes for a specific term. To remove the hold, check with your academic advisor or the department that placed the hold on your account.

Satisfactory Academic Progress (SAP): You must maintain SAP to remain eligible for federal and state financial aid, some University aid, and certain private loans. Satisfactory academic progress includes cumulative SCSU grade point average, credit completion rate (courses attempted versus courses completed), and maximum timeframe. See the complete policy at www.stcloudstate.edu/srfs/policies/sap.aspx.

Withdrawn Course: A course you remove from your class schedule after the end of the free drop/add period and before the withdrawal deadline. The course appears on your transcript as a "W" grade and you are responsible for 100 percent of the course charges. This is not the same as a dropped course. NOTE: Withdrawing from courses lowers your credit completion rate and may affect your academic and financial aid standing. See www.stcloudstate.edu/srfs/withdrawals/default.aspx, "Dropped Course" and "Satisfactory Academic Progress (SAP)."



STUDENT EXPECTATIONS

St. Cloud State University expects all students to engage in learning, both within and outside of the classroom, and advocate for themselves by utilizing student success resources. See the Our Husky Compact on the inside front cover and the Resource Directory on pages 4-6.

STUDENT HANDBOOK / STUDENT CODE OF CONDUCT

The Student Handbook connects students to many of the policies and procedures they are expected to be familiar with and follow as members of the St. Cloud State community. The most basic of these is the Student Code of Conduct, which assists all students in understanding their rights, responsibilities and privileges as a St. Cloud State University student. The Student Handbook and Student Code of Conduct are located at: www.stcloudstate.edu/studenthandbook.

Student Life and Development, Atwood Memorial Center 219
(320) 308-3111
sld@stcloudstate.edu
www.stcloudstate.edu/sld

RESPECT & RESPONSIBILITY PROGRAM

St. Cloud State University is committed to creating a community free of all forms of discrimination and harassment. We want all of our students to enjoy a healthy and engaging experience while in college. To help foster this environment, new students are required to complete the Respect & Responsibility program. Students who do not complete this program will not be able to register for courses the following semester. This program consists of two educational components:

Part One: Not Anymore, an on-line course focused on sexual and relationship violence prevention. Specific instructions to complete the course will be sent to your St. Cloud State Email a few weeks prior to fall semester; you are encouraged to complete the course before arriving on campus.

For questions about the Not Anymore part:
www.stcloudstate.edu/womenscenter or (320) 308-4958

Part Two: The Community through Diversity workshop is held on campus during the first weeks of the semester. Many students complete the workshop as part of the Huskies First Four Orientation on Friday, August 18th or during Transfer and Commuter Orientation on Sunday, August 20th. Many students will register for a workshop during Advising & Registration Day.

For questions and workshop registration information:
www.stcloudstate.edu/sld/respect.aspx or (320) 308-3111

Note: PSEO, graduate and students taking only on-line courses are not required to attend a Community through Diversity workshop, but will need to complete Part One: Not Anymore.

Your participation in Respect & Responsibility will result in a welcoming environment that allows all students the opportunity to realize personal and academic success.

ACADEMIC PERFORMANCE STANDARDS

It is important for you to keep academic success in mind from the very beginning of your college career. The university sets minimum standards for satisfactory academic progress. Normally, students must maintain at least a 2.00 cumulative grade point average and a cumulative percentage of credits completed of 66.67 percent to be in good academic standing. Eligibility for financial aid will also be affected if students do not maintain satisfactory academic progress. Check withdrawal deadlines for each semester by login to e-Services

GRADE POINT AVERAGE (GPA) SCALE

A+	4.0	A	4.0	A-	3.67
B+	3.33	B	3.0	B-	2.67
C+	2.33	C	2.0	C-	1.67
D+	1.33	D	1.0	D-	.67
F, FN, 0					

The GPA calculation used to determine satisfactory academic progress is based only on St. Cloud State coursework.

CUMULATIVE PERCENTAGE OF CREDITS COMPLETED

To measure completion rate, take St. Cloud State University cumulative credits successfully completed plus credits accepted in transfer and divide by St. Cloud State University credits attempted plus credits accepted in transfer. Successful completion of credits means earning a passing grade (A+ through D- or S) in a course. Grades of F, FN, U, I, IP, W, and Z in a course count as non-completed credits.

EXAMPLE: Jason attended St. Cloud State for one term and attempted a total of 15 credits. After his first semester, he has earned 12 credits and has three credits of withdrawal. To determine his percentage of credits completed, Jason would divide the credits he earned (12) by the credits he attempted (15). Jason's completion rate would be 80 percent and he would be in good academic standing based on his percentage of credits completed.

and choosing View/modify course schedule. Further information can be found at <http://www.stcloudstate.edu/srfs/withdrawals>

See the current University warning/probation/suspension policy at: www.stcloudstate.edu/srfs/policies/sap.aspx

Tobacco Policy

St. Cloud State University is a tobacco-free campus. The tobacco-free policy is enforced on all university-owned property including the River Walk and part of Barden Park. It will not be enforced on city streets and city sidewalks that are adjacent to campus. Exceptions will be made in accordance with the Minnesota Clean Indoor Air Act, MS. 144.4167, which allows tobacco use in Traditional Native American ceremonies, scientific studies, and theatrical productions. Further, tobacco use will be permitted inside private motor vehicles on University property as long as tobacco users demonstrate respect for individuals and the environment. For more information on the policy and information about help for tobacco cessation, see our campus Health and Wellness website: www.stcloudstate.edu/tobaccofree



TAKING CARE OF BUSINESS

PLACEMENT TESTING

Brown Hall 115
(320) 308-8378
placementtesting@stcloudstate.edu
www.stcloudstate.edu/placementtesting

At St. Cloud State University newly admitted students are able to take Accuplacer placement exams in reading comprehension, math and biology to determine proper course placement in English composition, math, and other subjects, such as biology and chemistry, determined by the student's intended major.

Placement testing is NOT required of all students. A student's ACT subtest scores in reading, English, and math may determine what classes a student should take. If ACT subtest scores are below a required level, placement testing may be needed or recommended. New students may also use placement testing to test directly into major level courses in math, chemistry, biology and other subjects.

NOTE: ACT scores are valid for 2-4 years depending on when the test was taken. Students should consult an advisor to determine if their ACT scores are valid for placement. If the scores are no longer valid, students will need to take the placement exam.

Specific Course Placement According to ACT subtest scores can be found at www.stcloudstate.edu/placementtesting/policy.aspx.

ACCUPLACER PLACEMENT EXAMS

Reading Comprehension Placement Exam

Required for all students who score below 21 on the ACT reading subtest AND below 18 on the ACT English subtest AND do not have a Reading Comprehension placement exam score on file.

Math Placement Exam

Available for students who score below the required ACT math score and would like to place into higher level math or other courses required by their intended major.

Students wanting to place into the following courses will need to take the College Level Math placement exam:

- Trigonometry (MATH 113)
- Calculus (MATH 211 or MATH 221)
- Discrete Mathematics (MATH 271)

NOTE: Additional courses in departments such as Biology, Chemistry, Physics, Engineering, and Computer Science may require either a minimum placement exam math score, a math course prerequisite, or a minimum ACT math score.

MAJOR SPECIFIC PLACEMENT EXAM

Biology Placement Exam (for BIOL 202)

Recommended for students whose intended major is Nursing, Radiologic Technology, Pre-Occupational Therapy, or Pre-Physical Therapy. If a student does not pass the BIOL 202 placement exam, either BIOL 103 or BIOL 151 serve as prerequisites for BIOL 202. Students should consult an advisor to determine the most appropriate BIOL 202 course prerequisite based on intended major. Students may take the biology placement exam anytime during a semester, but the exam can only be taken once.

For more information or to schedule a testing time, please visit the Undergraduate Studies Placement Testing website at www.stcloudstate.edu/placementtesting/ or call the Advising and Student Transitions office at 320-308-6075.

CAMPUS CARD - YOUR OFFICIAL CAMPUS ID

Atwood Memorial Center, 1st Floor
(320) 308-1683
campuscard@stcloudstate.edu
www.stcloudstate.edu/campuscard

It's your access to the University Library, recreational facilities and Husky games. It's the way to pay for everything you need on campus. It's the Campus Card, and when you've got it you've got Your Passport to Life at St. Cloud State University.

Features

- Convenient: Forget about carrying cash, checks or credit cards.
- Fast: With exact change every time, the Campus Card is even faster than cash!
- Safe: Your Campus Card lost or stolen? No problem! Simply notify us. We'll take care of the rest and issue you a new card.
- SCSU Spirit: Your Campus Card shows off the St. Cloud State name with pride

Explore and learn about your Campus Card's many features. Highlights of your Campus Card include:

Campus Cash

Every student has a Campus Cash account. Campus Cash can be used for anything, including: buying food, paying tuition, purchasing concert and theatre tickets and much more!

Husky Meal Plan and Husky Bucks

If you live on campus, you have the option for a Meal Plan and Husky Bucks. Husky Bucks can be used at any Chartwells-run food vendor.

Commuter, Faculty and Staff Meal Plans and Blizzard Bucks

If you live off campus or are faculty or staff, you have the option for Meal Plans and Blizzard Bucks. Blizzard Bucks can be used at any Chartwells-run food vendor.

Student Print Account

Each semester, St. Cloud State adds \$8.00 to your student print account, which is accessed with your Campus Card.

Other Added Value

Use your Campus Card for admission to sporting events, such as Husky Hockey games, free Metro bus rides, access to the fitness center and much more!

HUSKY BOOKSTORE

Centennial Hall (1st Floor)
(320) 308-1489
bookstore@stcloudstate.edu
www.thehuskystore.com

Purchasing or Renting Textbooks

The official St. Cloud State University Husky Bookstore is located in Centennial Hall. Representatives from the bookstore are available to answer questions about purchasing or renting textbooks. Hours of operation for the bookstore vary throughout the year. A portion of sales made at the Husky Bookstore, including rental, goes towards scholarships for St. Cloud State students.

As a convenience for students, up to \$1,000 per semester in course materials purchased at the Husky Bookstore may be charged to individual student accounts. In order to utilize this benefit, students must have no holds on their student accounts at the time of the purchase.

TAKING CARE OF BUSINESS / COMMON READING PROGRAM

This payment option is only available approximately 3 weeks prior to the start of the semester. For more information about this service please contact Business Services at (320) 308-4012.

Husky Books Express

This service is a convenient, streamlined online book-buying service. By signing in with your StarID and password, you may select and order books to be sent to you or to be picked up at the Husky Bookstore. Follow these steps to buy books through Husky Books Express:

1. Go to www.stcloudstate.edu
2. Click on **Current Students**
3. Click on **e-Services Sign-In**
4. Login using your StarID and password
5. Click on **Husky Books Express** on the left
6. Login again with your StarID and password
7. You will either be given a list of courses for which you are registered, or have the opportunity to select the semester for which you would like to purchase books. A list of courses for which you are registered will be shown.
8. Click **View Books**. You will then be allowed to select your

preference for new or used books, rental books or e-books. You will also be able to view the book prices and decide which course books you want to purchase at that time.

TEXTBOOK PRICE MATCH AVAILABLE AT THE HUSKY BOOKSTORE!

The price match program is for textbooks (new, used and rental) that are currently in-stock with the Husky Bookstore as well as the competitor. We price match against Amazon, Barnes & Noble, or a local campus competitor. Book Titles, ISBN, SKUS, must identically match. You may bring a screenshot or ad from competitor's website, shown via mobile device. **Price match will be provided on a store gift card to be used on further purchases.** Post-secondary and 3rd Party Students are exempt from this program.



COMMON READING PROGRAM
ST. CLOUD STATE UNIVERSITY

ABOUT THE PROGRAM

New first-year students receive a copy of ***Citizen: An American Lyric*** by **Claudia Rankine** as part of the University's Common Reading Program. The program facilitates students sharing in a common academic experience around a dimension tied to Our Husky Compact. This year's book invites conversation around the theme of Thinking Creatively and Critically, as MacArthur Genius grant winner and poet Claudia Rankine explores provocative moments of the experience of race in America through various creative lenses: prose, poetry, and images.

www.claudiarankine.com

Citizen will help our students and our campus explore the role of the arts in engaging with challenging issues we face in our contemporary world. Students will engage with the book through Huskies First Four programming, in first-year coursework, and with on campus programming throughout the fall semester.



Find resources for reading, exploring questions about the book, and information about both our Huskies First Four "Let Us Catch You Reading" campaign and the scholarship essay competition at:

www.stcloudstate.edu/commonread



[facebook.com/SCSU Common Read](https://facebook.com/SCSUCommonRead)



twitter.com/SCSUcommonread
#StCloudHuskiesRead

**WRITE AN ESSAY ABOUT THE BOOK AND WIN A SCHOLARSHIP FOR SPRING 2018!
COMPETITION OPENS SEPTEMBER 1 AND CLOSSES NOVEMBER 6**

ADVISING & REGISTRATION

Advising & Student Transitions

Centennial Hall 366

(320) 308-6075

Email: advising@stcloudstate.edu

www.stcloudstate.edu/advising



NEED TO MAKE CHANGES TO YOUR SCHEDULE?

If you have questions about your schedule or you would like to change your schedule after your Advising & Registration Day, please do not hesitate to contact us at Advising & Student Transitions. You can access your schedule after your Advising Day by signing into e-Services. See page 21 of this Guide for instructions to access e-Services and registration instructions.

You may also call the Office of Records & Registration at (320) 308-2111 or email registrar@stcloudstate.edu with any questions about navigating e-Services.

International students and student athletes are strongly encouraged to discuss withdrawal options with an advisor.

ADVISING & STUDENT TRANSITIONS

Advising & Student Transitions helps all first-year and transfer students make St. Cloud State University their new home and a place to flourish. We offer students individualized help with:

- Advising and Registration Days
- New Student Orientation/Huskies First Four Days
- Academic Collegiate Excellence (ACE) Program
- Living and Learning Communities
- General Education Advising
- Exploring Academic Major & Minor Options
- Moving to a Program/Major Advisor
- Academic Resources and Services
- Intended Major Changes
- Graduation Requirements
- Academic Warning, Probation, & Suspension Advising

EXPLORING & CHANGING YOUR INTENDED MAJOR

Advising & Student Transitions welcomes students to visit with an advisor for assistance with exploring major options. Students may change their intended major online through our website. Students may also stop by Advising & Student Transitions to change their intended major.

WHO IS MY ADVISOR?

All first-year students are assigned a professional advisor from one of the following advising areas: Advising & Student Transitions, Multicultural Academic Support Center, Honors, or Business Advising Center. Transfer students are assigned to an advisor from the department of their intended major. Transfer students who are undecided about their major are assigned to an advisor in Advising & Student Transitions.

HOW DO I LOOK UP MY ASSIGNED ADVISOR?

Advisor assignments are made prior to each student's first semester of attendance at St. Cloud State. Students can look up their assigned advisor as well as the advisor's contact information through the Advising & Student Transitions website. Until assigned an advisor, students may direct their questions to Advising & Student Transitions or, for transfer students, to the department of their intended major.

MOVING TO A PROGRAM/ MAJOR ADVISOR (FIRST-YEAR STUDENTS)

New first-year students will work with their assigned advisor and staff from the Career Center to engage in an academic exploration process to confirm, expand, and/or clarify the choice of an intended major. Most students will work with their assigned advisor for at least one academic year before moving to a program or major advisor. Highly motivated and committed students can expedite the process. Students will want to reach out to their advisor early in their first semester to discuss and design an individual path toward a declared major.



ADVISING & REGISTRATION



UNIVERSITY CATALOG

Students can access valuable information about majors, course descriptions, specific major requirements, and degree maps through the online University Catalog at: catalog.stcloudstate.edu

ACCESS CODE/REGISTRATION WINDOW

Students do not need an access code to register for their first semester, but will need an access code from their assigned advisor to register for any subsequent semesters until admitted to a major.

Students are assigned a registration window (specific day and time assigned for registration) based on the amount of credits they have earned in transfer or directly from St. Cloud State. Students can find their assigned registration window by logging into e-Services. Students can take advantage of their registration window by obtaining their access code from their assigned advisor prior to the registration period.

QUESTIONS TO ASK YOUR ADVISOR

- Are there any courses that could double count for my major and liberal education?
- Are there any prerequisite courses required in my major?
- What requirements must I complete in order to be eligible to apply for my major?
- Do I need a minor or one year of the same foreign language? Are there specific minors or languages you would recommend?
- What is the admission GPA requirement for my major? Are there any other GPA requirements I need to be aware of?
- When should I meet with you to discuss my academic plan for next semester and receive my access code?
- What is the best way to contact you when I have questions or to schedule an appointment with you?

IF A COURSE YOU WANT IS FULL

Remain diligent in checking the online registration system for open seats. Students can make changes to their schedules through several days into the semester, so an opening could occur at any time during that period.

Check e-Services for the "Add to Wait List" feature. Students may add themselves to an electronic wait list for some courses in e-Services.

Try to contact the professor in person, by stopping by his or her office, by phone, or by e-mail to politely inquire whether he or she anticipates being able to allow any additional students into the class. This may not be possible, but the professor may also be able to offer other suggestions.

GRADUATION REQUIREMENTS

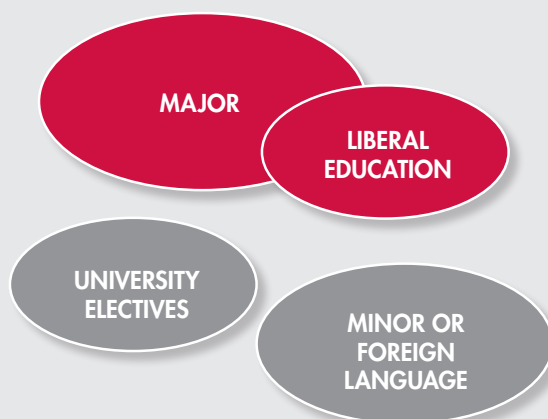
To graduate from St. Cloud State students will need to complete the following requirements:

- Earn a minimum of 120 credits with a minimum 30 credits in residency at St. Cloud State
- Earn at least 40 credits at the upper level (courses numbered 300-499)
- Complete a major*
- Complete the liberal education requirements (40 credits)
- Complete three diversity courses. The diversity courses must come from three different rubrics or academic areas.
- Meet the GPA requirements of your major
- Apply for graduation (recommended one semester prior to graduation). Applications for graduation can be found online at www.stcloudstate.edu/srfs/graduation

***Some majors require a minor or one year of the same foreign language.**

A SNAPSHOT OF A BACCALAUREATE DEGREE

The red ovals are components students must complete to earn a baccalaureate degree from St. Cloud State. The grey ovals are possible components for students to complete based upon students' major or interests.



ADVISING & REGISTRATION

COLLEGE SUCCESS STRATEGIES

✓ *Manage your time*

- For every credit you take, you should plan for three hours of your time per week: One hour in class and the other two hours spent outside of class studying.
- Make a daily schedule with class attendance as the top priority. Give yourself enough study time for homework, research, and projects.
- Use an academic planner, such as The Link, to keep track of assignment deadlines and test dates.

✓ *Study smart*

- Having trouble finding notes for class? Create your own personal system to stay organized. College life is much easier when you know where things are.
- Know how, when, and where to study. The campus offers many places to study, whether it is your residence hall, the library, student centers, or a coffee shop. Find a place where you are relaxed, focused, and motivated.

✓ *Get to know your professors*

- Ask for help when you need it. Professors are more than willing to help you when they can. They, too, want you to succeed.
- Professors are required to have weekly office hours that are noted on the course syllabus.

✓ *Use your campus resources*

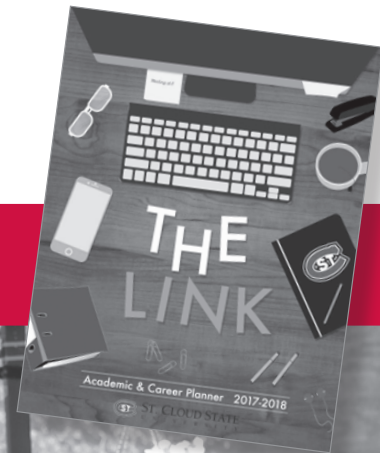
- Tutoring services are provided for students. Please see the Academic Learning Center website at: www.stcloudstate.edu/alcenter, and page 4 of this guide

✓ *Stay healthy*

- Keep yourself active. Whether it is working out or playing intramural sports, remember to have fun!
- Eat healthy.
- Get enough sleep. If you can't get enough sleep at night, schedule a nap during the day.

Success at St. Cloud State starts with our Academic & Career Planner—**The Link!**

Available for purchase at the Husky Bookstore.



ADVISING & REGISTRATION

Office of Records and Registration

Administrative Services 118
(320) 308-2111
www.stcloudstate.edu/srfs



RECORDS AND REGISTRATION

The Office of Records and Registration is your source for information about:

- Student records/official transcripts
- Enrollment and degree verifications
- Diplomas and graduation
- Course schedules and course registration
- Transfer credit evaluation
- Veterans educational benefits
- Teacher licensure application processing
- Degree Audit Reports

TRANSFER CREDITS

Transfer credits include courses taken at another institution, the International Baccalaureate program (IB), College Level Examination Program (CLEP), Advanced Placement (AP) and military credits. In order for the University to consider accepting these credits, you must have an official transcript sent from the institution where you received the credits to the Office of Records and Registration at St. Cloud State University. NOTE: If you have attended or are currently attending one or more Minnesota State Colleges or Universities (Minnesota State), your official transcripts can be electronically retrieved by St. Cloud State University. To transfer credits from a Minnesota State school, you must complete the Minnesota State Electronic Transcript Evaluation Request form (which includes a list of schools that are part of the Minnesota State system.) This form can be found at www5.stcloudstate.edu/registrar/students/etranscriptrequest

If you have questions about whether St. Cloud State has received your transcript(s), please contact the Office of Records and Registration at (320) 308-5112. Your transfer credits will appear on your Degree Audit Report (see box below for instructions on how to access this report). The receiving college or university decides which credits transfer and whether those credits meet degree requirements in liberal education, major or minor courses or university electives.

- Credits from other institutions accredited by agencies recognized by the Council on Higher Education Accreditation will also be evaluated for transfer but additional documentation may be required.
- Quarter credits will be converted to semester credits upon transfer.
- All credits earned with a grade of "C-" or higher from a regionally accredited university or college-level institution are considered for credit transfer.
- Transfer credit will not be granted for remedial or non-degree credit as indicated by the sending institution.

If you have questions about credits in transfer after reviewing your degree audit with your advisor, please send an email to registrar@stcloudstate.edu.

DEGREE AUDIT REPORT

The Degree Audit Reporting System (DARS) is an online program that provides progress-toward-degree information for students. The degree audit report for students will typically list liberal education requirements, credits taken at St. Cloud State, and credits accepted in transfer. Courses that are marked SEE DEPT on the Degree Audit are transferred courses that may be equivalent to a major or minor course/program requirement. In this case, departmental review is required. After acceptance to a major program of study, the degree audit report will indicate the requirements needed to complete a degree program.

HOW TO ACCESS YOUR DEGREE AUDIT REPORT:

1. Access the St. Cloud State website at www.stcloudstate.edu
2. Click "myHuskyNet" on the top navigation bar
3. Enter your StarID and password
4. Click "e-Services" on the left
5. Click "Grades and Transcripts" on the left
6. Click "Interactive Degree Audit Report"

If you have any questions about your Degree Audit, please send an email to registrar@stcloudstate.edu

STUDENT RESOURCES

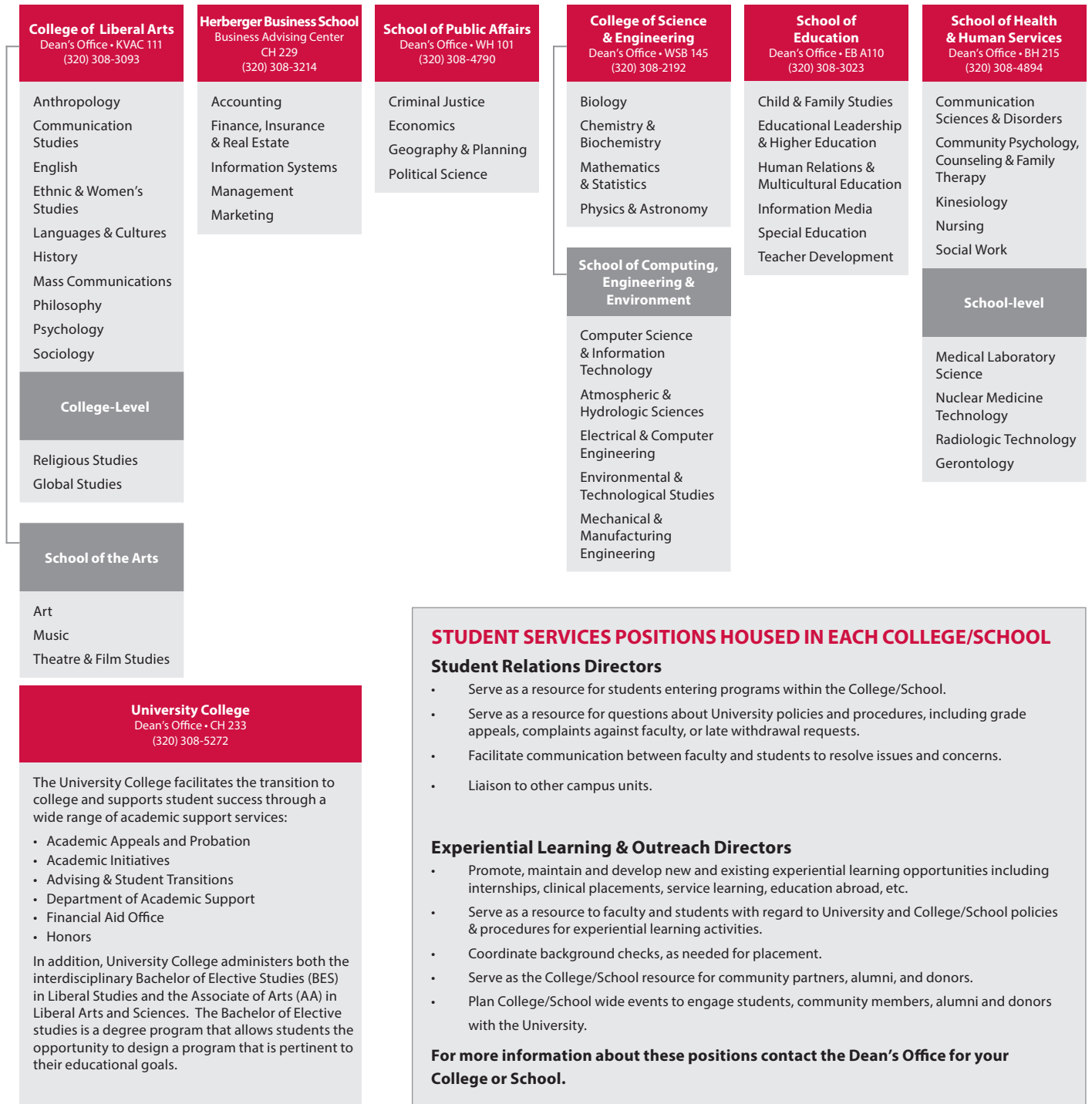
All students who wish to earn a baccalaureate degree will have to choose a major and possibly a minor program in one of our academic departments. We encourage students, even those with a strong sense of the major they want to pursue, to take some time with an advisor or Career Center staff member to explore options across the university. Our goal is to help each student either solidify their choice of major or discover a new way to work toward career and life goals. In the midst of your exploration, be certain to ask about meta majors, which are designed to help you match your interests and dreams with one or more of our programs of study.

Below is a chart of our schools, colleges, and departments at St. Cloud State. We will work together to help each student find their academic home within the larger university.

ACADEMIC ORGANIZATIONAL CHART

ST. CLOUD STATE UNIVERSITY

is organized into six autonomous colleges and schools with two schools embedded in each of the colleges.



STUDENT TECHNOLOGY RESOURCES

INFORMATION TECHNOLOGY SERVICES

Miller Center 102 (Library)
(320) 308-7000
huskytech@stcloudstate.edu
www.stcloudstate.edu/huskytech

St. Cloud State University provides a variety of technology resources and services to support the campus life of a student. HuskyTech, is the branded name for technology at St. Cloud State.

Accounts Information

StarID: Your StarID, is an individual ID and password provided by the Minnesota State system that will provide you access to wi-fi, network file space and web space, academic course work and the ability to access technology-related resources under myHuskyNet. Your StarID password is set to expire every 180 days. Go to starid.mnscu.edu for assistance.

St. Cloud State Email: Your St. Cloud State email account is a separate ID that shares the StarID password. To access your email, go to www.stcloudstate.edu and click on the myHuskyNet link at the top of the page. Login with your StarID and password. To locate your St. Cloud State email address, click on the MY ACCOUNT tab on the top of the navigation bar. Your St. Cloud State email address (xxxxx@stcloudstate.edu) will be displayed under the email line.

HuskyTech (Computer Store & Help Desk)

Help Desk: The HuskyTech support center is for all students to get help and answer questions on technology topics including email, password reset, ResNet (Residential Network) and campus technology. We can help with all your personal computer and technology needs.

Computer Store: Students can purchase laptops, tablets and computers at the HuskyTech retail store, located in the James W. Miller Center (Library). We carry Apple, HP and Microsoft products with educational pricing discounts. We have warranty options, loan availability and can help you choose the system that best fits your academic needs.

Virus Protection & Malware: HuskyTech can provide assistance on personal device protection with antivirus software recommendations, along with malware cleanup. We offer solutions for iOS, Android, Windows and Macintosh operating systems.

SCSU Email as Official Communication

St. Cloud State email is an official form of communication at St. Cloud State. All students are required to check their St. Cloud State email account regularly to be sure not to miss important announcements.

Examples of official email messages:

- Public Safety and campus security alerts
- Student government election information
- Health Services notices
- Course registration information
- Financial aid information
- Messages from St. Cloud State's president
- Technology notices

myHuskyNet (single-sign on)

The myHuskyNet student portal is a gateway to customized information regarding your campus services, technology and campus life. You can log in by clicking on the top navigation of the St. Cloud State website. After login with your StarID and password, you can access email, D2L Brightspace, file/web space and e-Services. In addition, you can view your course schedule, grades and much more.

Software (Free Microsoft Office)

Students are provided access to download five free versions of Microsoft Office. Go to login.microsoftonline.com and download the software to your device with your St. Cloud State email address and password.

The Student Technology Fee, a component of your tuition and fees, provides funding for many of the computing and technology services on campus.

Computers & Printing

St. Cloud State provides more than 500 computers to students across campus in various General Access computer labs, open to all students. These labs offer both Windows and Mac operating systems. Most computer labs are equipped with black-and-white laser printers. Color printers are available in the Miller Center (Library) and Kiehle Visual Arts Center. Each semester, the Student Technology Fee account deposits \$8 on to your Campus Card for printing to be used during that semester.

Printing Costs:

- Single-sided prints: 4¢
- Double-sided prints (*default setting*): 7¢
- Color prints: 25¢

WiFi Connection

Students connect to the St. Cloud State wireless network through HuskyNet Secure. On your device, select HuskyNet Secure and the login will require your StarID and password. Wireless connectivity is located across campus and in the residential halls.

Technology in the Classroom

• D2L Brightspace

Instructors at St. Cloud State may use a specialized, web-based learning management system, called D2L Brightspace. This system provides a variety of online options including accessing course content, uploading assignments, taking quizzes, participating in discussions and listening to course lectures, all through a standard web browser. As a student, you may be required to log in to D2L Brightspace for a portion or all of your course work.

• Electronic Classrooms

St. Cloud State has more than 200 electronic classrooms that allow professors to enhance instruction with technology. E-classrooms are equipped with a computer, touch screen audio-visual management system and multimedia equipment.

HUSKIES FIRST FOUR/ORIENTATION

NEW STUDENT ORIENTATION

2017-2018

Find more information and a full schedule online at:

www.stcloudstate.edu/firstfour

HUSKIES

1ST

4

Students needing an accommodation to participate in Huskies First Four activities should contact orientation staff at least one week in advance.

HUSKIES FIRST FOUR DAYS

Huskies First Four Days is our new student orientation program designed to connect you to campus academically and socially to prepare you for a successful start at St. Cloud State.

JOIN US FOR:

Late Night Socials
Interactive Service Projects
Academic Orientation
Community through Diversity Workshops


New students will meet Orientation Leaders who will help you find your classrooms, explore St. Cloud State and meet other new students with similar interests.



Things to Keep in Mind:

Specific programming will be available for transfer students, adult learners, commuters, Veterans, and international students.

QUESTIONS?

 (320) 308-6075

 advising@stcloudstate.edu

 [facebook/SCSUFYE](https://facebook.com/SCSUFYE)

 [twitter/SCSUFIRSTYEAR](https://twitter.com/SCSUFIRSTYEAR)

REGISTERING FOR CLASSES



INSTRUCTIONS TO ACCESS E-SERVICES, ST. CLOUD STATE'S COURSE REGISTRATION SYSTEM

1. Go to the St. Cloud State homepage: www.stcloudstate.edu
2. Click on the "myHuskyNet" link at the top of the page
3. Enter your StarID and password
4. Click "e-Services" on left menu

INSTRUCTIONS TO REGISTER FOR A COURSE

www.stcloudstate.edu/srfs/registration/guide.aspx

1. Click "Courses & Registration" on the left panel
2. Click "Search for a Course"
3. Change "Semester" to appropriate term of registration
4. Change "Subject" to the subject of the course being searched
5. Enter the 3-digit Course Number to the right of "Subject"
6. Click the "Search" button
7. Click the Add (+) symbol for the desired course
8. The course will then be added to your Wish List
9. Click "Review My Plan"
10. Click the box(es) next to the course ID#
11. Click "Select Course(s) to proceed to Register"
12. Enter your StarID password in the box
13. Click "Register"
(a confirmation screen will appear, indicating you are registered for the course)
14. Repeat steps 1-13 to register for more courses

NOTE: Under "Search for a Course" you can click "Expand/Collapse for Advanced Search" to narrow your course search by specific goal areas, times, days, etc.

INSTRUCTIONS TO DROP/WITHDRAW FROM A COURSE

www.stcloudstate.edu/srfs/registration/guide.aspx

1. In e-Services, click "Courses & Registration" on the left panel
2. Click "View/Modify Schedule"
3. Change semester if necessary
4. Click on "X" to the left of course from which you would like to withdraw
5. Enter your StarID password in the box
6. Click on "Drop/Withdraw" in blue box
7. A confirmation showing "Drop/Withdraw Successful" will appear

NOTE: International students and student athletes are strongly encouraged to discuss withdrawal options with an advisor.

INSTRUCTIONS TO LOCATE YOUR ST. CLOUD STATE EMAIL ACCOUNT, ST. CLOUD STATE'S OFFICIAL FORM OF COMMUNICATION

1. Go to the St. Cloud State homepage: www.stcloudstate.edu
2. Click on the "myHuskyNet" link at the top of the page
3. Login with your StarID and password
4. Click "MY ACCOUNT" on the top navigation bar
5. Your St. Cloud State email address will be displayed under the Email line

REGISTERING FOR CLASSES

MY SEMESTER SCHEDULE

MONDAY	TUESDAY	WEDNESDAY	THURSDAY	FRIDAY
(8:00-8:50)	(8:00-9:15)	(8:00-8:50)	(8:00-9:15)	(8:00-8:50)
(9:00-9:50)		(9:00-9:50)		(9:00-9:50)
(10:00-10:50)		(10:00-10:50)		(10:00-10:50)
(11:00-11:50)	(11:00-12:15)	(11:00-11:50)	(11:00-12:15)	(11:00-11:50)
(12:00-12:50)	(12:30-1:45)	(12:00-12:50)	(12:30-1:45)	(12:00-12:50)
(1:00-1:50)		(1:00-1:50)		(1:00-1:50)
(2:00-2:50)		(2:00-2:50)		(2:00-2:50)
(3:00-3:50)	(3:30-4:45)	(3:00-3:50)	(3:30-4:45)	(3:00-3:50)
(4:00-4:50)		(4:00-4:50)		(4:00-4:50)
(5:00-7:45)	(5:00-7:45)	(5:00-7:45)	(5:00-7:45)	(5:00-7:45)
(6:00-8:45)	(6:00-8:45)	(6:00-8:45)	(6:00-8:45)	(6:00-8:45)
St. Cloud State email	@stcloudstate.edu			

My courses help meet which requirements? <i>NOTE: Some courses may fulfill more than one requirement</i>		
Liberal Education Courses	Major Courses	Elective Courses

REGISTERING FOR CLASSES

REGISTRATION LAB CHECKLIST

CREDITS_____

- ☐ Review Interactive Degree Audit Report (DARS)
 - ☐ Goal 1 course if needed and available: ENGL 191 (or equivalent) OR CMST 192
 - ☐ Identify class categories (Major/Liberal Education/Program Course/Electives)
- ☐ Time Management
- ☐ Student approved schedule_____initials
- ☐ Tuition and Fees Payment
 - FAFSA complete or incomplete? (Circle one)
 - If incomplete, contact Financial Aid and/or Billings & Payment offices to finish payment process
- ☐ Husky Books Express
- ☐ Locate St. Cloud State Email:_____@stcloudstate.edu
(See page 21 for instructions)
- ☐ Complete Belonging Exercise
- ☐ Sign up for Huskies First Four Group
- ☐ Complete Advising & Registration Days Survey

What Next?

- ☐ Get Campus Card if needed
- ☐ Attend Residential Life presentation if applicable
- ☐ Review New Student Checklist on page 2 of this Guide.

NOTES:

LIBERAL EDUCATION PROGRAM

The St. Cloud State Liberal Education Program is the official general education program at St. Cloud State University. Completion of the Liberal Education Program is a component of a baccalaureate degree and a requirement for graduation.

The courses listed here may change. The list will be updated periodically. Check the University Catalog (catalog.stcloudstate.edu) under Academic Programs then Liberal Education Program for the current list.

- Students must complete all ten goals and earn at least 40 credits.
- Number superscripts above the course indicate another goal to which the course may be applied.
- Students must complete 3 diversity courses which are **bold** and underlined. The Diversity courses must come from 3 different rubrics or academic areas. We strongly recommend and encourage that 1 Diversity course be an approved Racial Issues course. See Goal 7 for approved Racial Issues (RIS) courses
- The University Honors Program provides an alternative to the St. Cloud State Liberal Education Program.
- Students may refer to their degree audit report in e-Services for completed and/or partially completed goal areas.
- All courses listed here are 3 credits unless otherwise stated.

REQUIREMENTS:

Goal 1: Communication (2 courses)

Select one of the following:

ART 198, Research and Analytical Writing in Art (4 cr.)
 ENGL 190, Introduction to Rhetorical and Analytical Writing: Supplemental (4 cr.)
 ENGL 191, Introduction to Rhetorical and Analytical Writing (4 cr.)
 ENGL 198, Analytical and Research Writing in the Humanities (4 cr.)
 ENGL 291, Introduction to Analytical and Rhetorical Writing (ENGL 291 should be taken only in consultation with an advisor) (2 cr.)
 TH 198, Rhetorical and Analytical Writing for Theatre (4 cr.)

Students are also required to complete:

CMST 192, Introduction to Communication Studies

Goal 2: Critical Thinking (1 course)

ASTR 107³, Concepts of Stars and the Universe
 CMST 306⁶, Rhetoric in Popular Culture
 CMST 318, Argumentation and Advocacy
 ENGL 306⁶, Rhetoric in Popular Culture

LIB 280, Critical Thinking in Academic Research
 PHIL 194, Critical Reasoning
 POL 191, Introduction to Political and Legal Reasoning
 POL 192, Critical Reasoning: Issues and Events in American Politics

Goal 3: Natural Sciences (2 courses, no more than 4 credits from one rubric or academic area. Include at least one laboratory course, indicated with*)

AHS 104*, Introduction to Atmospheric Science
 AHS 105*, The Water Environment
 AHS 106¹⁰, Natural Hazards and Human Society
 AHS 109*, Introduction to Environmental Geology
 AHS 220*, Physical Geology Systems (4 cr.)
 AHS 230*, Introduction to Physical Hydrology (4 cr.)
 AHS 260*, Introductory Meteorology (4 cr.)
ANTH 140, Human Origins
 ASTR 105, Astrobiology
 ASTR 106*, Concepts of the Solar System
 ASTR 107², Concepts of Stars and the Universe
ASTR 120^{*8}, Archaeoastronomy
 ASTR 205*, General Astronomy (4 cr.)
 BIOL 101^{*10}, Environment and Society
 BIOL 102^{*10}, The Living World
 BIOL 103*, Human Biology
 BIOL 104*, Human Disorders (Topical)
BIOL 106, Cultural Botany
BIOL 107*, Biology of Women

BIOL 111*, Applied Human Biology
 BIOL 152^{*10}, Organismal Diversity (4 cr.)
 CHEM 101, Understanding Chemistry
 CHEM 105¹⁰, Chemistry and the Environment
 CHEM 151*, General, Organic, and Biological Chemistry (5 cr.)
 CHEM 160*, Preparatory Chemistry (4 cr.)
 CHEM 207*, Forensic Science
 CHEM 210*, General Chemistry 1 (4 cr.)
 CHEM 211*, General Chemistry 2 (4 cr.)
 CHEM 307*, Advanced Forensic Science
 GEOG 272*, Physical Geography
 PHYS 101, Famous People of Science
 PHYS 103*, Concepts in Physics
 PHYS 208¹⁰, Energy and Environment
 PHYS 231*, General Physics I (4 cr.)
 PHYS 232*, General Physics II (4 cr.)
 PHYS 234*, Classical Physics I (5 cr.)
 PHYS 235*, Classical Physics II (5 cr.)

LIBERAL EDUCATION PROGRAM

Goal 4: Mathematical/Logical Reasoning (1 course)

CSCI 200, Elements of Computing
 MATH 112, College Algebra
 MATH 113, Trigonometry
 MATH 115, Precalculus (5 cr.)
 MATH 193, Mathematical Thinking
 MATH 196, Finite Mathematics
 MATH 201, Elements of Mathematics I

MATH 211, Survey of Calculus I
 MATH 221, Calculus I (4 cr.)
 MATH 222, Calculus II (4 cr.)
 PHIL 223, Elementary Symbolic Logic
 STAT 193, Statistical Thinking
 STAT 219, Statistics for the Social Sciences
 STAT 239, Statistics for the Biological and Physical Sciences

Goal 5: History and the Social and Behavioral Sciences (2 courses with no more than 4 credits from one rubric or academic area)

AFST 250⁸, Introduction to African Studies
ANTH 101⁸, Introduction to Anthropology
ANTH 130, Introduction to Prehistoric Cultures
ANTH 188, Indians of the Americas
 ANTH 198, The Anthropology of Modern American Life
ANTH 250⁸, Introductory Cultural Anthropology
 ART 231⁶, Art History Survey II
 BRIT 250, Contemporary Britain
 CEEP 101, Applying Psychology (*same as CPSY 101*)
 CEEP 262, Human Growth and Development (*same as CPSY 262*)
 CFS 220, Introduction to Parents and Children
 CJS 100, History of Criminal Justice
 CJS 101, Survey of Criminal Justice
CJS 111, Crime and Justice in America
 CMTY 200⁸, Cities, Suburbs, and Small Towns
CMTY 222⁷, Diversity in the American Experience
 CMTY 394, Urban Planning (*same as GEOG 394*)
 CMST 220, Interpersonal Communication
 CPSY 101, Applying Psychology (*same as CEEP 101*)
CSD 130⁷, Introduction to Human Communication Disorders
EAST 250⁸, Introduction to East Asia
 ECON 197, Economics for Everyday Life
 ECON 201, Introduction to Economics
 ECON 205, Principles of Macroeconomics
 ECON 206, Principles of Microeconomics
 ECON 381, Economics of Crime and Justice
 ETHS 312, American Indian Women's Lives
ETHS 335, Asian Pacific American Women
ETHS 345⁶, Asian Pacific Americans in Popular Culture
 ETHS 410, Contemporary American Indian Issues
ETHS 425, Contemporary Asian Pacific American Issues
 ETS 182⁸, Modern Technology and Civilization
ETS 183⁸, Technology and Third World Development

ETS 375¹⁰, Society and the Environment
 GEOG 271, Economic Geography
 GEOG 394, Urban Planning (*same as CMTY 394*)
GERO 208, Introduction to Gerontology
GERO 405, Aging and Diversity
GERO 415, Women and Aging
 HIST 101⁸, Studies in World History
HIST 106⁸, Historical Studies
HIST 109⁷, Race in America
 HIST 140, America to 1865
 HIST 141, United States Since 1865
HIST 150⁸, Twentieth Century World
 HIST 195⁹, Democratic Citizenship
 HIST 210⁸, Western Civilization I: Antiquity to 1500
 HIST 211⁸, Western Civilization II: 1500-Present
HIST 352⁷, American Indian History
HIST 358⁷, Immigration, Race and Ethnicity
LAST 250⁸, Introduction to Latin America
 POL 111⁹, American National Government
 PSY 115, Introduction to Psychology
PSY 225, Psychology of Women
 PSY 228¹⁰, Conservation Psychology
 PSY 240, Developmental Psychology
SOC 111⁹, Social Problems
 SOC 160, Principles of Sociology
 SOC 177, Intimate Relations and Family
SOC 200¹⁰, Environmental Sociology
SOC 211, Crime Myths and Media
SOC 273⁸, Sociology of Gender
SOC 276⁸, Families and Globalization
SPED 203, Exceptionalities and Human Diversity
 TH 270⁶, American Musical Theatre
WS 201, Introduction to Women's Studies

Goal 6: Humanities and Fine Arts (2 courses with no more than 4 credits from one rubric or academic area)

ART 130, Studio Art for Non-Majors
ART 131⁸, Introduction to the Visual Arts of the World
 ART 230⁸, Art History Survey I
 ART 231⁵, Art History Survey II
 ART 333, Art and Literature
ART 433⁸, Asian Art History
ART 434⁸, African Art History
ART 435⁸, Art History of the Americas
ART 490⁸, Folk, Ethnic, and Indigenous Art
COMM 146, American Television and Cultural Diversity
 COMM 220, Introduction to Mass Communications
COMM 275, Documentaries of the Holocaust
 CMST 210, Performance and Everyday Life
 CMST 211, Public Speaking
 CMST 306², Rhetoric in Popular Culture
 CMST 316, Speech Writing
 CSD 171, American Sign Language
 DANC 142, Dance for Everyone
DANC 341⁸, Global Dance Perspectives
 ENGL 184, Introduction to Literature
 ENGL 201, Classics of Literature
 ENGL 202, Myth, Legend, and Sacred Literatures

ENGL 203, Gender Issues in Literature
ENGL 215, American Indian Literature
ENGL 216⁷, African American Literature
ENGL 305, Lesbian, Gay, Bisexual, Transgender Literature (4 cr.)
 ENGL 306², Rhetoric in Popular Culture
 ETHS 301, Special Topics in American Indian Studies
 ETHS 307, Chicano/a Cultural Expressions
ETHS 345⁵, Asian Pacific Americans in Popular Culture
 FREN 101⁸, Elementary French I (4 cr.)
 FREN 102⁸, Elementary French II (4 cr.)
 FREN 110⁸, Introduction to French Culture
 FREN 201⁸, Intermediate French I (4 cr.)
 FREN 202⁸, Intermediate French II (4 cr.)
 FS 175, Film and Culture
 FS 260, The Art of Film
GEOG 270, Introduction to Cultural Geography
 GER 101⁸, Elementary German I (4 cr.)
 GER 102⁸, Elementary German II (4 cr.)
 GER 110⁸, Introduction to German Culture
 GER 201⁸, Intermediate German I (4 cr.)
 GER 202⁸, Intermediate German II (4 cr.)
 HUMS 250, Introduction to the Humanities

LIBERAL EDUCATION PROGRAM

(Goal 6, continued)

IM 260, Exploring Digital Media
JPN 101⁸, Elementary Japanese I (4 cr.)
JPN 102⁸, Elementary Japanese II (4 cr.)
 JPN 201⁸, Intermediate Japanese I (4 cr.)
 JPN 202⁸, Intermediate Japanese II (4 cr.)
 LC 101⁸, Elementary Language I (Topical) (4 cr.)
 LC 102⁸, Elementary Language II (Topical) (4 cr.)
 LC 201⁸, Intermediate Languages I (Topical) (4 cr.)
 LC 202⁸, Intermediate Languages II (Topical) (4 cr.)
 MUSM 100, Introduction to Musical Concepts
 MUSM 123, Experiencing Live Music
MUSM 125⁸, Music in World Culture
 MUSM 126, History of Rock and Roll Music
 MUSM 229, Jazz History
 MUSE 110-148, Private Lessons (1-3 cr.)
 MUSE 159⁸, World Drumming Group (1 cr.)
 MUSE 155-367, Ensembles (1 cr.)
 MUSE 358, Chamber Singers (1 cr.)
PHIL 111⁸, Multicultural Philosophy
 PHIL 112, Philosophical Explorations
 PHIL 116, Elementary Topics in Philosophy (1-3 cr.)
PHIL 211⁸, Philosophy and Feminism

PHIL 212⁹, Moral Problems and Theories
 PHIL 221, Philosophy of Religion
 PHIL 222, Existentialism
 PHIL 251, History of Western Philosophy I
 PHIL 252, History of Western Philosophy II
REL 100⁸, World Religions
 REL 150, Introduction to the Old Testament/Hebrew Bible
 RUSS 101⁸, Elementary Russian I (4 cr.)
 RUSS 102⁸, Elementary Russian II (4 cr.)
 RUSS 110⁸, Introduction to Russian Culture
 RUSS 201⁸, Intermediate Russian I (4 cr.)
 RUSS 202⁸, Intermediate Russian II (4 cr.)
 SPAN 101⁸, Elementary Spanish I (4 cr.)
 SPAN 102⁸, Elementary Spanish II (4 cr.)
 SPAN 110⁸, Introduction to Spanish-Speaking Cultures Through Film and Music
 SPAN 201⁸, Intermediate Spanish I (4 cr.)
 SPAN 202⁸, Intermediate Spanish II (4 cr.)
TH 130⁸, World Theatre
 TH 148, Acting for Everyone
 TH 270⁵, American Musical Theatre
 WS 330, Gender and Popular Culture

Goal 7: Human Diversity (1 course)

CMTY 222⁵, Diversity in the American Experience (RIS)
CSD 130⁵, Introduction to Human Communication Disorders
ENGL 216⁶, African American Literature (RIS)
ETHS 111, Race in America (RIS)
ETHS 201, Introduction to Ethnic Studies (RIS)
ETHS 205, Introduction to Chicano/a Studies (RIS)
ETHS 210, Introduction to American Indian Studies (RIS)
ETHS 215, Introduction to Asian American Studies (RIS)
ETHS 220, Introduction to African American Studies (RIS)
ETHS 308, African American Cultural Expressions
ETHS 310, American Indians in the Social Science Curriculum (RIS)

ETHS 408, Major Works in African American Studies
ETHS 470, The Black Community (RIS)
HIST 109⁵, Race in America (RIS)
HIST 352⁵, American Indian History
HIST 358⁵, Immigration, Race and Ethnicity
HURL 102, Human Relations and Race (RIS)
JWST 180, Anti-Semitism in America
POL 310, U.S. Politics of Race, Ethnicity, and Immigration (RIS)
REL 180, Religion: Race and Racism
SOC 268, Race and Ethnicity (RIS)
WS 220, Race and Gender in the U.S. (RIS)

Goal 8: Global Perspective (1 course)

AFST 250⁵, Introduction to African Studies
ANTH 101⁵, Introduction to Anthropology
ANTH 250⁵, Introductory Cultural Anthropology
ART 131⁶, Introduction to the Visual Arts of the World
 ART 230⁶, Art History Survey I
ART 433⁶, Asian Art History
ART 434⁶, African Art History
ART 435⁶, Art History of the Americas
ART 490⁶, Folk, Ethnic, and Indigenous Art
ASTR 120³, Archaeoastronomy
 BLAW 230, Consumer and Personal Law
 BRIT 101, Introduction to the British Cultural Experience (1 cr.)
 BRIT 201, Reflections on the British Cultural Experience (2 cr.)
CFS 260, Children in a Changing World
CMST 330, Intercultural Communication
 CMTY 200⁵, Cities, Suburbs, and Small Towns
CSD 230, Global Perspectives on Communication Disorders
DANC 341⁶, Global Dance Perspectives
EAST 250⁵, Introduction to East Asia
ECON 350, Economics of Developing Countries
 ETS 182⁵, Modern Technology and Civilization
ETS 183⁵, Technology and Third World Development
 ETS 185¹⁰, Energy Resources and Issues
 FREN 101⁶, Elementary French I (4 cr.)
 FREN 102⁶, Elementary French II (4 cr.)
 FREN 110⁶, Introduction to French Culture
 FREN 201⁶, Intermediate French I (4 cr.)
 FREN 202⁶, Intermediate French II (4 cr.)

GEOG 111, Introduction to Global Geography
 GER 101⁶, Elementary German I (4 cr.)
 GER 102⁶, Elementary German II (4 cr.)
 GER 110⁶, Introduction to German Culture
 GER 201⁶, Intermediate German I (4 cr.)
 GER 202⁶, Intermediate German II (4 cr.)
 GLST 195⁹, Global Society and Citizenship
 HIST 101⁵, Studies in World History
HIST 106⁵, Historical Studies
HIST 150⁵, Twentieth Century World
 HIST 210⁵, Western Civilization I: Antiquity to 1500
 HIST 211⁵, Western Civilization II: 1500-Present
 HURL 303¹⁰, Global Social and Environmental Justice
IM 204, Research Strategies in a Changing World
JPN 101⁶, Elementary Japanese I (4 cr.)
JPN 102⁶, Elementary Japanese II (4 cr.)
 JPN 201⁶, Intermediate Japanese I (4 cr.)
 JPN 202⁶, Intermediate Japanese II (4 cr.)
LAST 250⁵, Introduction to Latin America
 LC 101⁶, Elementary Language I (Topical) (4 cr.)
 LC 102⁶, Elementary Language II (Topical) (4 cr.)
 LC 201⁶, Intermediate Languages I (Topical) (4 cr.)
 LC 202⁶, Intermediate Languages II (Topical) (4 cr.)
LIB 290, Social Media in a Global Context
 MGMT 260, Principles of International Business
 MKTG 100, Contemporary Business Concepts
 MKTG 200, Principles of Entrepreneurship
MUSM 125⁶, Music in World Culture

LIBERAL EDUCATION PROGRAM

(Goal 8, continued)

MUSP 159⁶, World Drumming Group (1 cr.)
PHIL 111⁶, Multicultural Philosophy
PHIL 211⁶, Philosophy and Feminism
 PHIL 484⁹, Global Business Ethics
 POL 101, Political Ideas and Institutions
 POL 251, Introduction to World Politics
 POL 333, Latin American Government and Politics
 POL 334, Middle East Government and Politics
POL 335, African Government and Politics
POL 337, Emerging Political Issues in the Nonwestern World
POL 434, Politics of the Arab Peninsula
POL 436, Southeast Asian Governments and Politics
REL 100⁶, World Religions
REL 225, Asian Religions
 RUSS 101⁶, Elementary Russian I (4 cr.)

RUSS 102⁶, Elementary Russian II (4 cr.)
 RUSS 110⁶, Introduction to Russian Culture
 RUSS 201⁶, Intermediate Russian I (4 cr.)
 RUSS 202⁶, Intermediate Russian II (4 cr.)
SOC 273⁵, Sociology of Gender
SOC 276⁵, Families and Globalization
 SPAN 100, Spanish for Health Care Professionals
 SPAN 101⁶, Elementary Spanish I (4 cr.)
 SPAN 102⁶, Elementary Spanish II (4 cr.)
 SPAN 110⁶, Introduction to Spanish Speaking Cultures Through Film and Music
 SPAN 201⁶, Intermediate Spanish I (4 cr.)
 SPAN 202⁶, Intermediate Spanish II (4 cr.)
TH 130⁶, World Theatre
 WS 340, Global Feminisms

Goal 9: Ethical and Civic Responsibility (1 course)

CMTY 195, Community and Democratic Citizenship
 ECE 101, Introduction to the Engineering Profession (*same as GENG 101*)
 ECON 195, Economics and Democratic Citizenship
 GENG 101, Ethics and the Engineering Profession (*same as ECE 101*)
 GLST 195⁸, Global Society and Citizenship
 HIST 195⁵, Democratic Citizenship
HURL 201, Non-Oppressive Relationships I
 LC 445, Service Learning Experience (2-4 cr.)

PHIL 212⁶, Moral Problems and Theories
 PHIL 213¹⁰, Environmental Ethics
 PHIL 484⁸, Global Business Ethics
 POL 111⁵, American National Government
POL 320, Women in Politics
 REL 201, Religious Pluralism
SOC 111⁵, Social Problems
 SW 195, Social Welfare and Democratic Citizenship

Goal 10: People and the Environment (1 course)

AHS 106³, Natural Hazards and Human Society
 ANTH 352, Human Ecology
 BIOL 101*³, Environment and Society
 BIOL 102*³, The Living World
 BIOL 152*³, Organismal Diversity (4 cr.)
 CHEM 105³, Chemistry and the Environment
 ETS 185⁸, Energy Resources and Issues
 ETS 260, Introduction to Environmental Studies
 ETS 363, Resource Management

ETS 375⁵, Society and the Environment
 GEOG 106, People and the Planet
 GEOG 372, Conservation of World Resources
 HURL 303⁸, Global Social and Environmental Justice
 PHIL 213⁹, Environmental Ethics
 PHYS 208³, Energy and Environment
 POL 453, Global Environmental Politics and Policies
 PSY 228⁵, Conservation Psychology
SOC 200⁵, Environmental Sociology

ADDITIONAL DIVERSITY COURSES:

ED 250, Children's Rights
ED 374, Multicultural Children's Literature
ETHS 350, Minorities in Latin America
HURL 206, Understanding Oppression (1 cr.)
HURL 497, Human Relations for Teachers I

HURL 498, Human Relations for Teachers II (1 cr.)
LAST 350, Minorities in Latin America
PESS 125, Social Dance
SOV 100, Introduction to Soviet and Eurasian Studies

STUDENTS TRANSFERRING IN COLLEGE CREDITS

St. Cloud State also accepts the completed Minnesota Transfer Curriculum (MnTC) as fulfilling the St. Cloud State Liberal Education Program, including diversity requirements.

Students with a partially completed MnTC are not required to repeat any goals they have already fulfilled at another Minnesota State College or University, and will be allowed to select from the course list above to complete the remaining ten MnTC goals.

Students with 20 or more transfer credits in Liberal Education will be required to complete fewer than three Diversity courses. For more information, see your Degree Audit Report or contact Advising and Student Transitions.

ACADEMIC RUBRICS

ACCT	Accounting	HUMS	Humanities
AFST	African Studies	HURL	Human Relations & Multicultural Education
AHS	Atmospheric & Hydrologic Sciences	IM	Information Media
ANTH	Anthropology	INTL	International Studies
ART	Art	IS	Information Systems
ASTR	Astronomy	JPN	Japanese
BIOL	Biological Sciences	JWST	Jewish Studies
BLAW	Business Law	LAST	Latin American Studies
BRIT	British Studies	LC	Languages and Cultures
CEEP	Counselor Education & Educational Psychology	LIB	Learning Resources & Services
CFS	Child & Family Studies	MATH	Mathematics
CHEM	Chemistry	MILS	Military Science
CJS	Criminal Justice Studies	MGMT	Management
CMST	Communication Studies	MKTG	Marketing
CMTY	Planning & Community Studies	MLS	Medical Laboratory Science
CNA	Computer Networking & Applications	MME	Mechanical & Manufacturing Engineering
COLL	College Transitions	MUSE	Music Education
COMM	Mass Communications	MUSM	Music Musicianship
CPSY	Community Psychology	MUSP	Music Performance
CSCI	Computer Science	NMDT	Nuclear Medicine Technology
CSD	Communication Sciences & Disorders	NURS	Nursing
DANC	Dance	PESS	Physical Education & Sport Science
EAP	English for Academic Purposes	PHIL	Philosophy
EAST	East Asian Studies	PHYS	Physics
ECE	Electrical & Computer Engineering	POL	Political Science
ECON	Economics	PSY	Psychology
ED	Education (Teacher Development)	RADT	Radiologic Technology
ENGL	English	REC	Recreation
ENGR	Engineering Science	REL	Religious Studies
ETHS	Ethnic Studies	RUSS	Russian
ETS	Environmental & Technological Studies	SCI	Science
FIRE	Finance, Insurance & Real Estate	SE	Software Engineering
FREN	French	SHHS	School of Health & Human Services
FS	Film Studies	SOC	Sociology
GENG	General Engineering	SOV	Soviet Studies
GEOG	Geography	SPAN	Spanish
GER	German	SPED	Special Education
GERO	Gerontology	SSCI	Social Science
GLST	Global Studies	SST	Social Studies
HBS	Herberger Business School	STAT	Statistics
HIST	History	STEM	Science, Technology, Engineering, & Math Education
HLTH	Health	SW	Social Work
HONS	Honors Program	TH	Theatre
HPE	Health & Physical Education	WS	Women's Studies

What Makes ST. CLOUD STATE A GREAT CHOICE?



OUR STUDENTS:



"The rewards I've gained by being an undergraduate researcher have boosted my resume but also my interpersonal and personal skills."
— **Sruthi Shankar,**
*Biomedical Science and Biochemistry Major,
University Honors Program Student*



"Here at St. Cloud State I've been able to have an experience that you can't really get anywhere else, and I know I've made a lot of connections with people in the professional field just because of my experience at St. Cloud State."
— **Neil Lommel,** *Mass Communications Major*

DISTINCTIONS:

- > Top 1% of the most affordable universities in Forbes' "America's Top Colleges" ranking
- > \$106 million in scholarships, loans and grants
- > Teams compete at NCAA Division I and II levels
- > More than 600 student veterans and active military enrolled
- > 1,100+ international students
- > St. Cloud State University is accredited by the Higher Learning Commission and the National Council for Accreditation of Teacher Education. Each college and school within the University has additional accreditations for departments and programs. Learn more at www.stcloudstate.edu/about/accreditation.aspx
- > The 100,000 sq. ft. Integrated Science and Engineering Laboratory Facility (ISELF) encourages collaboration, experiential learning and innovation including real-world, hands-on experiences through partnerships and collaborations with the community and businesses.

ST. CLOUD COMMUNITY:

St. Cloud's size, approximately 65,000 people, makes for an ideal place to study and live. Sitting on the edge of the Mississippi River, the great outdoors begins in our back yard. From biking, hiking and fishing in summer to cross country skiing, ice skating and snow shoeing in the winter. St. Cloud brings enjoyment year-round. Outdoor Endeavors on campus can help you plan your next adventure. St. Cloud also is an outstate Minnesota hub for shopping and entertainment. A vibrant downtown offers a variety of restaurants and live theatre. If you want to explore more, St. Cloud is just an hour away from professional sports action, major concert events at Target Center and Xcel Energy Center, contemporary art at the Walker Art Center, and the 520-store Mall of America in the Twin Cities (Minneapolis and St. Paul).



CAMPUS MAP ST. CLOUD STATE UNIVERSITY

Visit www.StCloudState.edu/campusmap/

TO REACH THE CAMPUS

- **From Interstate 94:** Take Exit 171. Drive north into St. Cloud on Stearns County Road 75. At 22nd Street South turn east. At Clearwater Road turn north. Follow the signs to campus.
- **From U.S. Highway 10:** Exit west on Minnesota Highway 23. Cross the Mississippi River on the Granite City Crossing Bridge. At Fifth Avenue turn south. Follow the banners to campus.
- **From the southwest (Minnesota Highways 15 and 23 and Stearns County Road 75):** All routes link with Division Street. Turn south at Fifth Avenue. Follow the banners to campus.
- **From the east (Minnesota Highway 23):** Follow Minnesota Highway 23 into St. Cloud. Cross the Mississippi River at the Granite City Crossing bridge. Turn south on Fifth Avenue. Follow the banners to campus.

LEGEND

AS	Administrative Services, 720 4th Ave S	C4
AIC	American Indian Center, 901 4th Ave S	E6
AMC	Atwood Center (Student Union), 651 1st Ave S	B3
BTH	Benton Hall, 445 1st Ave S	B1
BH	Brown Hall, 151 8th St S	B4
CPA	Coborn Plaza Apartments, 500 3rd St S	E1
CPW	Coborn Plaza Welcome Center, 355 5th Ave S	E1
CG	Community Garden	E2
CSH	Case Hall, 550 3rd Ave S	C2
CH	Centennial Hall, 201 8th St S (Husky Bookstore)	B4
ECC	Engineering and Computing Center, 910 3rd Ave S	C6
EH	Eastman Hall, 850 1st Ave S	A5
EB	Education Building, 840 4th Ave S	D5
ErH	Ervin House, 425 1st Ave S	B1
FLD	Husky Field	B8
FM	Facilities Management, 211 11th St S	C7
GC	Garvey Commons, 577 1st Ave S	B2
HaH	Halenbeck Hall, 1000 4th Ave S	D7
HBHNC	Herb Brooks National Hockey Center, 1204 4th Ave S	D9
HH	Headley Hall, 225 8th St S	C4
HiHH	Health Center, 550 3rd Ave S	C2
HP	Heating Plant, 1025 1st Ave S	B7
HiH	Hill Hall, 550 3rd Ave S	C2
Hub	Husky Hub, 1420 3rd Ave S	C11
HS	Husky Stadium, 1111 3rd Ave S	C8
ISELF	Integrated Science and Engineering Laboratory Facility, 230 8th St S	C5
KVAC	Kiehle Visual Arts Center, 580 1st Ave S	A2
LH	Lawrence Hall, 650 1st Ave S	A3
LeH	Lewis House, 724 4th Ave S	D4
MC	James W. Miller Learning Resources Center (library) 400 6th St S	D3
MH	Mitchell Hall, 566 1st Ave S	A2
PA	Performing Arts Center, 620 3rd Ave S	C3
PR	Public Parking Ramp, 516 4th Ave So	D2
PSC	Public Safety Center, 526 4th Ave So	D2
RGH	Richard Green House, 827 4th Ave So	E5
	Ritsche Auditorium (Stewart Hall)	A4
R	Riverview, 826 1st St S	A5
SBH	Sherburne Hall, 525 1st Ave S	B2
SMH	Shoemaker Hall, 915 1st Ave S	B6
SVN	Stateview North, 410 4th Ave S	D1
SVS	Stateview South, 422 4th Ave S	D1
STH	Stearns Hall (closed), 410 3rd Ave S	C1
SH	Stewart Hall (Ritsche Auditorium), 702 1st Ave S	A4
SRC	Student Recreation Center, 1111 3rd Ave S	C8
WH	Whitney House, 576 1st Ave S	A2
WSB	Robert H. Wick Science Building (Planetarium), 825 1st Ave S	B5
WC	Women's Center, 520 5th Ave S	E2
51B	51 Building, 51 8th St S	A4
525	525 Building, 525 4th Ave S	E2

Handicapped Parking
Wheelchair Accessible Entrance
Public Parking

